

3-axle walking-floor semitrailer, with aluminium frame



Produktvorteile und Optionals

- Lightweight aluminium frame, offering a payload advantage of up to 500 kg
- Cargo Floor sliding floor, hydraulic movement with 21 floor profiles for loading and unloading
- Movable partition with drag tarpaulin
- Floor control unit housed in waterproof box, incl. remote control with 10 m cable
- Conical design = different internal height at front and rear
- Installation of axles from well-known manufacturers such as SAF or BPW
- OPTIONAL: Version for waste transport
- OPTIONAL: Hydraulic folding roof with all-round frame and plastic tarpaulin
- OPTIONAL: Rear-mounted floor protection tarpaulin, pneumatically retractable, stowage on chassis
- OPTIONAL: 13 pairs of floor-mounted lashing rings, recessed on the side
- OPTIONAL: Side wall profiles welded throughout on inside
- OPTIONAL: 4 galvanised pallet roller tracks, installed flush with sliding floor, for loading and unloading vertical paper rolls

Fahrzeugdetails

TYPE DESIGNATION

3 AXLE SLIDING FLOOR SEMITRAILER - CARGO FLOOR SYSTEM

WEIGHTS

Gross train weight (perm.): 40 t Gross weight (techn.): 39 t Axle assembly load (techn.): 27 t Fifth-wheel load (techn.): 12 t Tare weight: approx. 7.4 t

DIMENSIONS

Internal platform length: approx. 13,500 mm Internal platform width: approx. 2,470 mm Conical internal height, front: approx. 2,680 mm, rear: approx. 2,780 mm = approx. 91 m³ load volume (internal length measured without partition, internal width between vertical side wall profiles, internal height up to upper edge of stabilising frame) Total width: 2,550 mm

FRAME

Welded aluminium frame construction Replaceable 2" kingpin (EC installation dimension, width across corners: 2,040 mm)

CHASSIS

Air suspension with lifting and lowering device (approx. +120/-80 mm) Automatic adjustment of driving level from 15 km/h air suspension unit with low-maintenance 430 mm disc brake axles, 3 x 9 t rigid, wheelbase 2 x 1,310 mm Tyres : 6 x 385/65 R 22.5 160J, manufacturer as per factory specifications 6 steel wheel rims 11.75 x 22.5, 10-hole, with rim offset, silver

SUPPORT FIXTURES

Mechan. 2 x 12 t support jacks, single-sided operation and thrust compensation, manufacturer as per factory specifications

BRAKE SYSTEM

Brake system according to EC Directive 71/320 or E CE R13 Two-line brake EBS
Wabco 2S2M = one axle sensed RSS - stability program Spring-loaded parking brake
Aluminium air tank

FLOOR

Hydr. movable aluminium profile floor for loading and unloading, 21-profile system for medium-duty use with 6 mm profiled sheets and 200 mm sliding length (not suitable for stackers and hand pallet trucks), made from rectangular aluminium tube, controls housed in waterproof case plus additional remote control with 10 m cable Rear floor reinforcement with 4 additional cross members Without truck hydraulic system (required pump specifications approx. 110 l/min. - 225 bar - 150 l oil tank, hydraulic connections = fixed plug-in couplings DN 25 on front face, without connecting hoses)

BODY

As per load securing certificate according to DIN EN 12642 Code XL Load-bearing aluminium construction with 30 mm aluminium hollow profile walls, side wall profiles tack-welded inside Fixed front wall and side walls with upper stabilising frame incl. integrated guide rail and 3 recessed, removable connecting cross bars = also act as tarpaulin support Rear wall = two-leaf door with 1 external espagnolette per door leaf and additional pneumatic safety lock, upper cross member on right in direction of travel retractable Partition adjustable across entire length with drag tarpaulin for depositing bulk materials Standing platform at front with railing and access on both sides for roller tarpaulin operation

COVER

Reinforced design of PVC roller tarpaulin (900 g/m²) incl. aluminium slat with hand crank and 2 longitudinal tension belts, approx. 200 mm overhang at front and approx. 400 mm left, 4 tension belts and turnbuckles on underside of body, tarpaulin colour according to availability Retainer for rolled up tarpaulin on right in direction of travel

ELECTRICAL EQUIPMENT

24 V lighting system according to EC Directive 76/756/ EWG 2 seven-chamber tail lights in underride protect LED side marker lights 4 front clearance lamps (2 at top + 2 at bottom) 2 contour lights on underride protection 2 x 7-pin and 1 x 15-pin sockets

PAINTWORK

Priming and spray painting with 2-component acrylic paints for commercial vehicles (standard RAL or truck colour) Plastic and hot-dip galvanised parts unpainted, powder-coated attachments/installation parts black Reflective contour marking strips across entire length of sides and all-round contour marking at rear (white on sides and red at rear by default), according to ECE 48 Transporting chemically aggressive bulk goods is not permitted, as this may affect the material properties and the painted surface.

ACCESSORIES

Rear markings as per ECE standards (horizontal on rear doors/rear wall)

ATTACHMENTS

Rear crash guard Wheel chock(s) as per regulations Plastic mudguards with spray protection as per regulations Side impact protection made from aluminium profiles as per regulations, coated black, foldable Aluminium underride protection, coated white, incl. protective flap for lights "Schwarz Müller" rubber apron on underride protection 1 spare wheel bracket for 1 spare wheel 1 standard plastic toolbox at side, approx.

1,000/500/500 mm 1 x retractable step unit at rear right 1 aluminium ladder, approx.
3,000 mm Brackets for brush etc.

Impressionen



3-axle sliding floor semitrailer with aluminium frame - optional: with electric roller cover



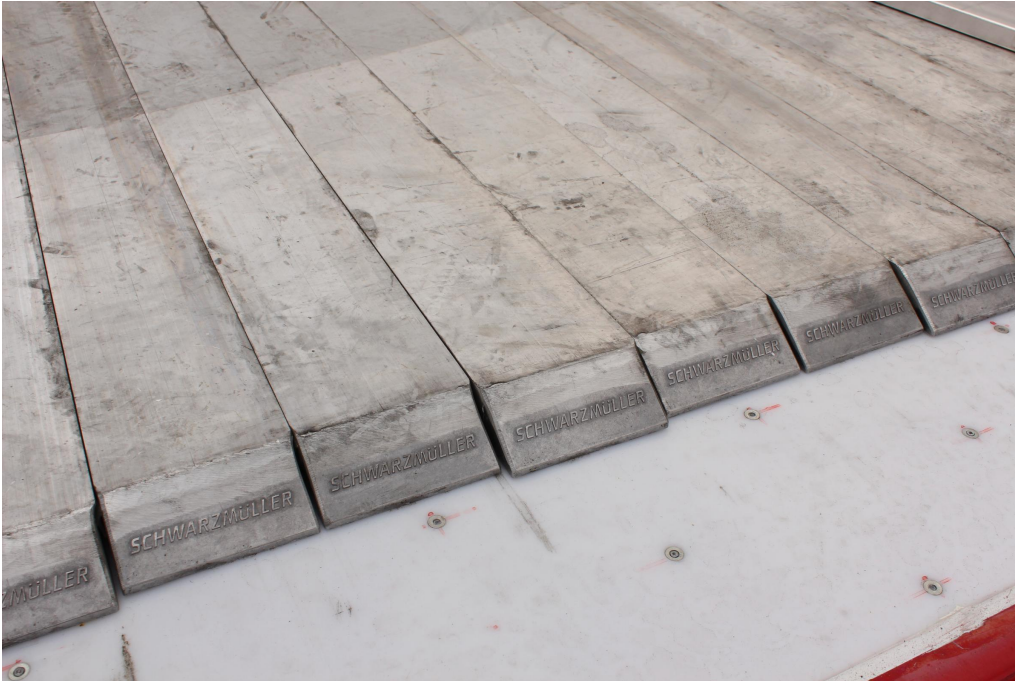
Aluminium lightweight design and therefore a payload advantage of up to 500 kg



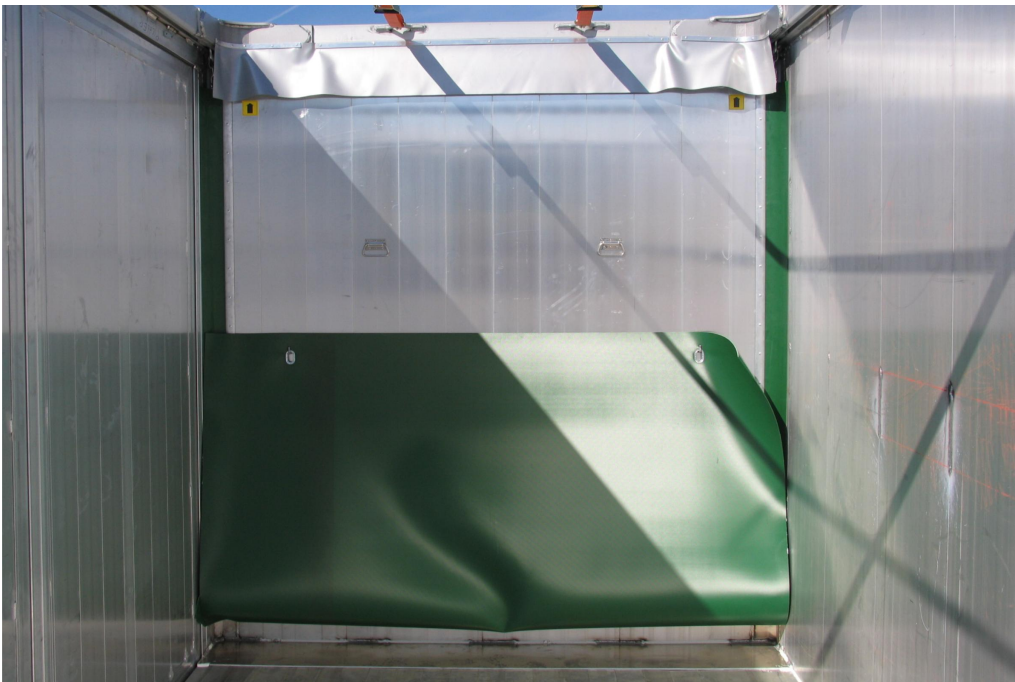
Aluminium hollow profile front wall, fixed with upper stabiliser frame



Rear wall = two-leaf door with one espagnolette on the outside of each door leaf and additional pneumatically operated safety lock



Cargo Floor sliding floor, hydraulic movement with 21 floor profiles for loading and unloading



Movable partition with drag tarpaulin



OPTIONAL: Hydraulic folding roof with all-round frame and plastic tarpaulin



Floor control unit housed in waterproof box, incl. remote control with 10 m cable

