

2-axle aluminium tank semitrailer for airfield and on-road operation with pumping and measuring system



Produktvorteile und Optionals

- Sophisticated design with perfect functionality
- Flexible handling of special customer requests
- Highest product purity thanks to optimum drainage based on unique double-wedge construction
- Aluminium or stainless steel chassis
- Installation of axles from well-known manufacturers such as SAF or BPW
- OPTIONAL: Choice of aluminium or stainless steel bumper
- OPTIONAL: High-set lights integrated in dome tank
- OPTIONAL: Separate plastic box for fire extinguisher

Fahrzeugdetails

TYPE DESIGNATION

2-AXLE ALUMINIUM TANK SEMITRAILER IN BOX BODY DESIGN

With pumping and measuring system, for airfield operation and road transport

GENERAL

Vehicle designation acc. to 9.1.1.2 ADR: FL Tank code acc. to 4.3.4.1 ADR: LGBF
Special provisions acc. to 6.8.4 ADR: TE 7, TE 19 For transporting JET A-1

CHASSIS AND ATTACHMENTS

Swivel rocker with cable bushing on fifth-wheel coupling Stainless steel chassis frame
Single wheel plastic mudguards with mud flaps and spray-suppression system Side
impact protection, foldable Aluminium underride protection Axles Air suspension unit
with low-maintenance axles and disc brakes, 2 x 10 t rigid, wheelbase 2,050 mm
Suspension Air suspension Tyres 4 x 425/65 R 22.5, 165 K, manufacturer as per
factory specifications 4 aluminium wheels, 11.75 x 22.5, polished outside, 10-hole,
without rim offset

BRAKE SYSTEM

Brake system according to EC Directive 71/320 or ECE R13 Two-line brake EBS-E =
electronic brake system WABCO 2S/2M = one axle sensed RSS - stability program
Spring-loaded parking brake on 2 axles Aluminium air tank

TRANSPORT CONTAINER - SELF-SUPPORTING

Aluminium alloy and wall thickness as per ADR regulations Double-wedge box format
for complete drainage Gross capacity: approx. 34,000 l 1 chamber Baffles, if techn.
required Water sump Overflow pan incl. outlet pipe(s) Protection for dome fittings

Aluminium catwalk in pan with foldable railing Aluminium ladder at rear

CONTAINER FITTINGS

3 dome covers with rapid-fill lids 1 fill level indicator, 10" 1 pneum. level switch for fill level monitoring 1 pneum. level switch for low-level limiter 3 pneum. tip valves 3 fan pots with flame arresters 1 mech. dipstick Filling 1 pneum. bottom valve with filling line and industrial dry couplings Output 2 pneum. bottom valves for output DN 100

THE FITTING CONFIGURATION ENABLES THE FOLLOWING OPERATIONS

Underwing pressure fuelling via long hose, underwing pressure fuelling via two deck hoses Refilling via deck hoses Overwing fuelling

PIPING

Aluminium piping routed to the front - through the swivel rocker - to the fittings cabinet on the STT Gas return line connected to fan pots Safety pressure relief/vacuum valve

MONITORING INSTRUMENTS

- Pump pressure - Venturi pressure - Hydraulic pressure - Flow chart - Pressure gauge for aluminium air tank - Pump suction/-pressure gauge - Sample extraction from piping

EQUIPMENT

1 external cable drum with automatic winding mechanism 2 x 6 kg fire extinguishers 2 warning triangles 1 hazard warning flasher with work light and batteries 1 plastic collecting vessel 1 dustpan, galvanised 1 hand brush 1 PVC box with oil binding agent 1 high-visibility vest 1 pair of protective goggles 1 pair of gloves 1 eyewash bottle 1 drain cover

LABELLING

1 single substance plate (30/1223) 3 removable hazardous substance labels (flame symbol) 3 removable hazardous substance labels (environmentally hazardous substances) Rear markings as per ECE standards

ELECTRICAL EQUIPMENT

2 seven-chamber tail lights in underride protection LED side marker lights 2 clearance lamps at front 2 contour lights on underride protection 15-pin socket 2 ex-proof fittings cabinet lights 2 red airfield warning lights

PAINTWORK

Priming and spray painting with 2-component acrylic paint for commercial vehicles (standard RAL or truck colour) Chassis with attachments and transport containers unicoloured as per colour specifications Plastic components unpainted Powder-coated attachments/installation parts black Contour markings Continuous reflective stripe on left and right, white, in tank length All-round at rear, segmented, red

ACCEPTANCE

Acceptance as per ADR Tank documentation

STT EQUIPMENT

Refuelling platform with steps on left in direction of travel Fittings cabinet with fold-up doors on both sides Pump unit on right in direction of travel Substructure for swivel rocker on fifth-wheel coupling

PUMP (IN FITTINGS CABINET)

1 self-priming tandem pump with hydraulic drive

FILTER WATER SEPARATOR

1 filter water separator with attached gas separator Filter equipment: 1 piston-type differential pressure gauge 1 gas return line to tank 1 check valve after filter Drainage line with 2 shut-off cocks R 3/4" and dummy caps

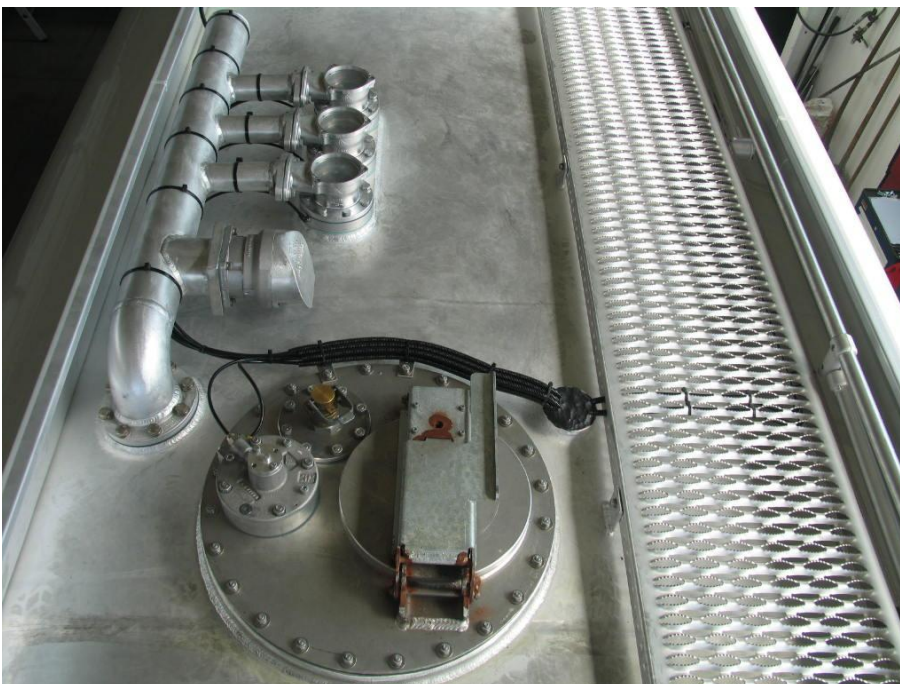
MEASURING SYSTEM (IN FITTINGS CABINET)

1 flow meter, with electron. meter Parallel display on refuelling platform Label printer in cab 1 sight glass 1 automatic valve for inline pressure control Pressure relief for the piping system 2 venturi nozzles

Impressionen



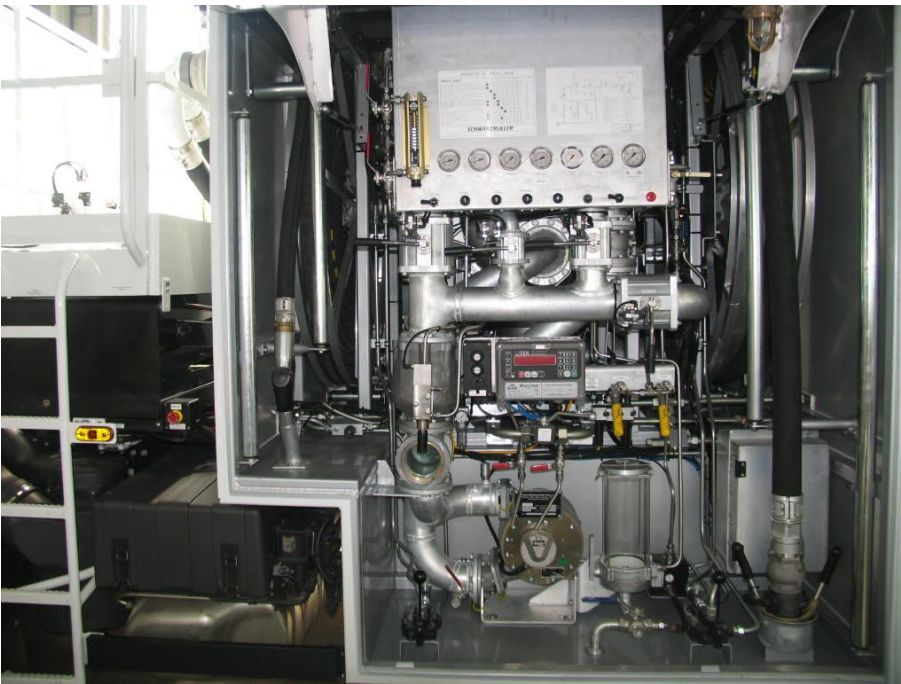
Modern design and maximum vehicle functionality



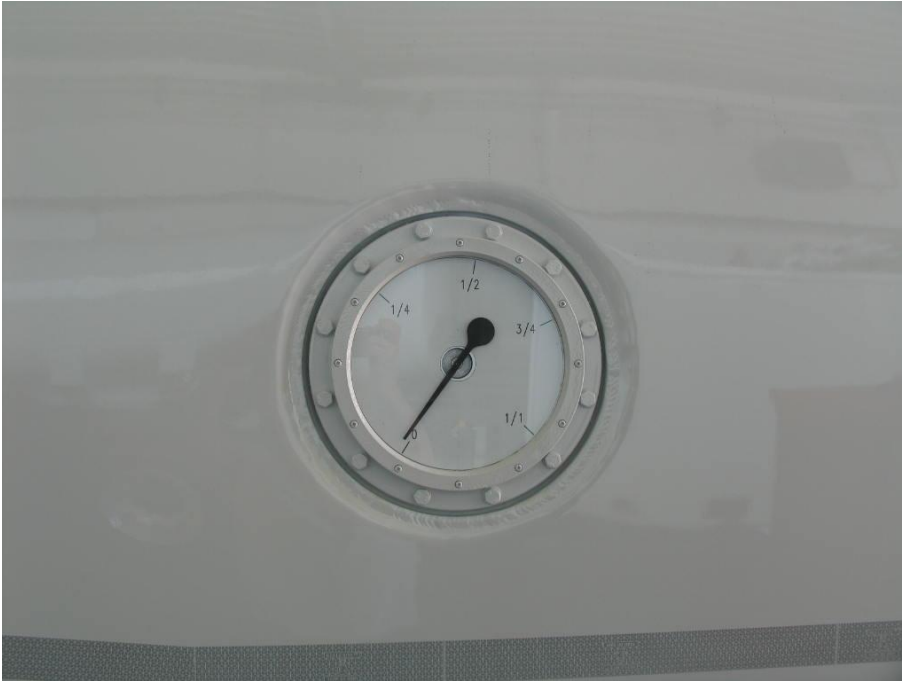
User-friendly arrangement of dome fittings



Ideal arrangement of equipment



Fittings cabinet features clearly arranged fittings



Fill level gauge



OPTIONAL: Choice of aluminium or steel bumper



OPTIONAL: High-set lights integrated in dome tank



OPTIONAL: Separate plastic box for fire extinguisher

