

2-axle aluminium tank trailer with gravitational measuring system



Produktvorteile und Optionals

- Sophisticated design with perfect functionality
- Optimum driving stability thanks to low centre of gravity
- Extremely light and flexible product discharge hoses (3" or 4")
- Box-like tank container with stable construction
- Optimum tank container storage incl. stainless steel chassis
- Installation of axles from well-known manufacturers such as SAF or BPW
- OPTIONAL: High-set LED light holder with optional integration of reversing camera
- OPTIONAL: Choice of aluminium or stainless steel bumper

Fahrzeugdetails

TYPE DESIGNATION

2-AXLE ALUMINIUM TANK TRAILER IN BOX BODY DESIGN

With gravitational measuring system, for mineral oil transport

GENERAL

Vehicle designation acc. to 9.1.1.2 ADR: FL

Tank code acc. to 4.3.4.1 ADR: LGBF

Special provisions acc. to 6.8.4 ADR: TE 7, TE 19

For transporting petrol UN 1203,
diesel fuel and EL heating oil UN 1202

CHASSIS AND ATTACHMENTS

Turntable and rear axle assembly frame in stainless steel

Low-maintenance ball bearing turntable

Drawbar, 40 mm drawbar eye , with rubber bearing and drawbar locking device

Spare wheel bracket

Plastic mudguards with mud flaps and spray-suppression system

Aluminium underride protection

Axles

Low-maintenance air suspension axles and disc brakes

each with 9 t axle load

Suspension

Air suspension

Tyres

5 x 385/65 R 22.5 160J, manufacturer as per factory specifications

5 steel wheels, 11.75 x 22.5, 10-hole

120 mm rim offset

BRAKE SYSTEM

Brake system according to EC Directive 71/320 or ECE R13

Two-line brake

EBS-E = electronic brake system

WABCO 4S/3M = both axles sensed

RSS - stability program

Spring-loaded parking brake on 2nd axle

Aluminium air tank

TRANSPORT CONTAINER - SELF-SUPPORTING

Aluminium alloy and wall thickness as per ADR regulations

Box shape

Gross capacity: approx. 19,000 l

3 chambers, chamber division as per customer specification

Baffles, if techn. required

Overflow pan incl. outlet pipe(s)

Protection for dome fittings

Aluminium catwalk in pan with foldable railing

Aluminium ladder at front

Earthing pin on left and right

Fittings cabinet

Large, continuous aluminium cabinet welded to container

with product collection channels on both sides

Parallel sliding cabinet doors

sealing facilities

EQUIPMENT

1 external cable drum with automatic winding mechanism

LABELLING

1 rotary plate (33/1203 or 30/1202) at rear

3 removable hazardous substance labels (flame symbol)

3 removable hazardous substance labels (environmentally hazardous substances)

Rear markings as per ECE standards

ELECTRICAL EQUIPMENT

2 seven-chamber tail lights in underride protection

LED side marker lights

2 clearance lamps at front

2 contour lights on underride protection

15-pin socket

PAINTWORK

Priming and spray painting with 2-component acrylic paint for commercial vehicles
(standard RAL or truck colour)

Stone guard at the fittings cabinet front wall.

Chassis with attachments and transport containers unicoloured as per colour
specifications

Plastic components unpainted

Powder-coated attachments/installation parts black

Contour markings

Continuous reflective stripe on left and right, white, in tank length

All-round at rear, segmented, red

ACCEPTANCE

Acceptance as per ADR

Tank documentation

Type approval

Certificate of conformity

CONTAINER FITTINGS - PER CHAMBER

1 dome cover with rapid-fill lid

1 electro-optical top sensor

1 tip valve for ventilation

1 fan pot with flame arrester

1 pneum. bottom valve

WEIGHTS

Gross weight (techn.): 18 t

Tare weight, depending on equipment: approx. 3.75 t min.

DIMENSIONS

Total width: 2,550 mm

Total height: approx. 3,000 mm

Total length: approx. 8,200 mm

PIPING WITH BOTTOM-LOADING

Filling on left in direction of travel, output on right in direction of travel

One drain line DN 100 per bottom valve to distributor on left in direction of travel and connecting line to gravitational measuring system

One API filling port per chamber incl. dummy cap on left in direction of travel

Trailer filling and drain line with 3" connecting hose

Gas return line connected to fan pots

Safety pressure relief/vacuum valve

GRAVITATIONAL MEASURING SYSTEM (MID)

Suitable for petrol, diesel oil and EL heating oil

Measuring system for gravity discharge

Combined gas extractor/meter DN 100

Electron. meter and connecting cable to truck

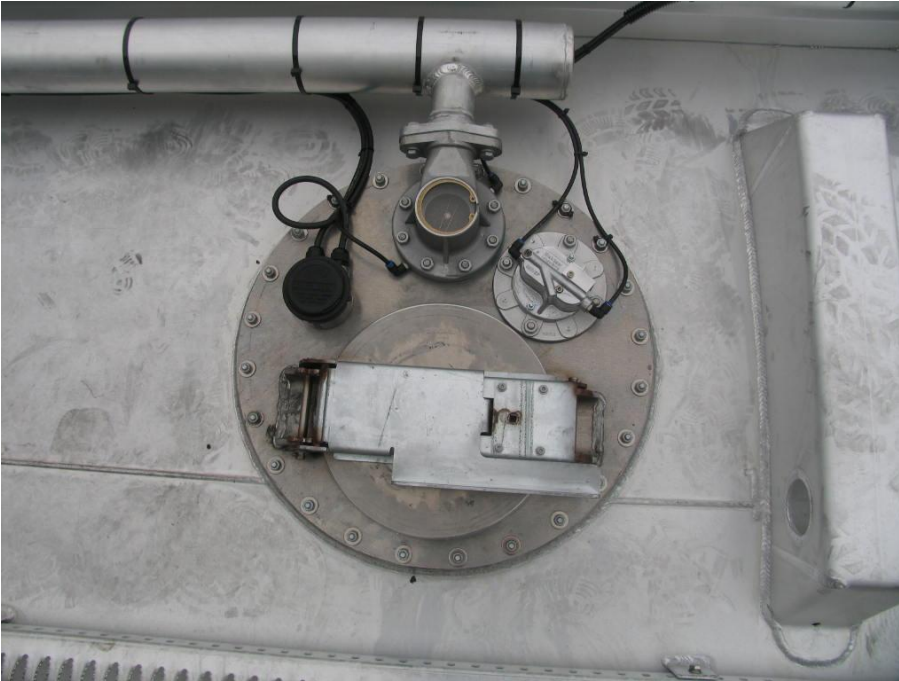
Impressionen



Modern design and maximum vehicle functionality



Fittings cabinet with parallel sliding cabinet doors and storage option for spare wheel



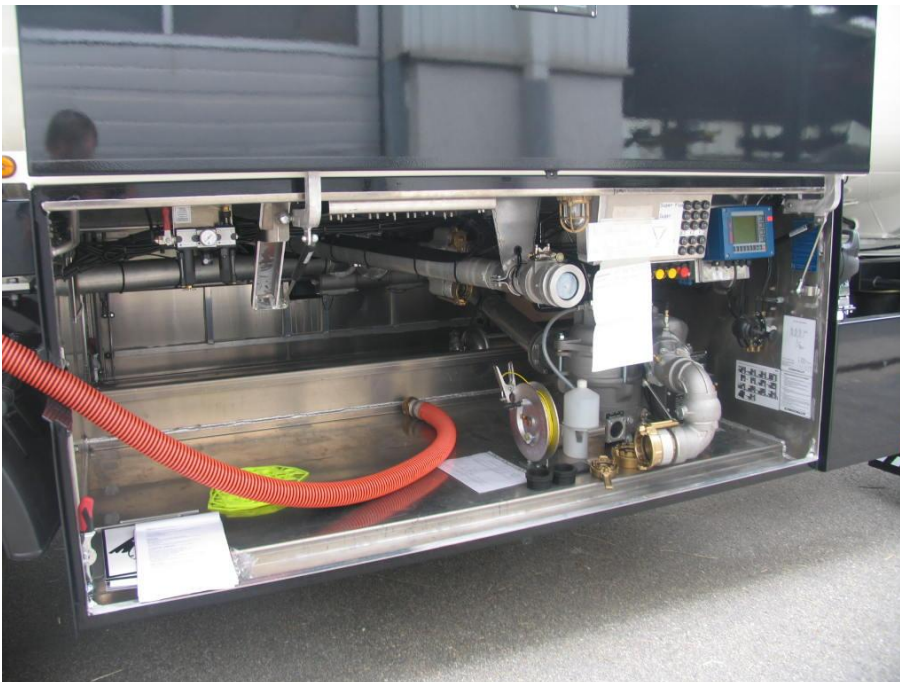
User-friendly arrangement of dome fittings



Drawbar with connection cables to the truck



Ideal arrangement of equipment



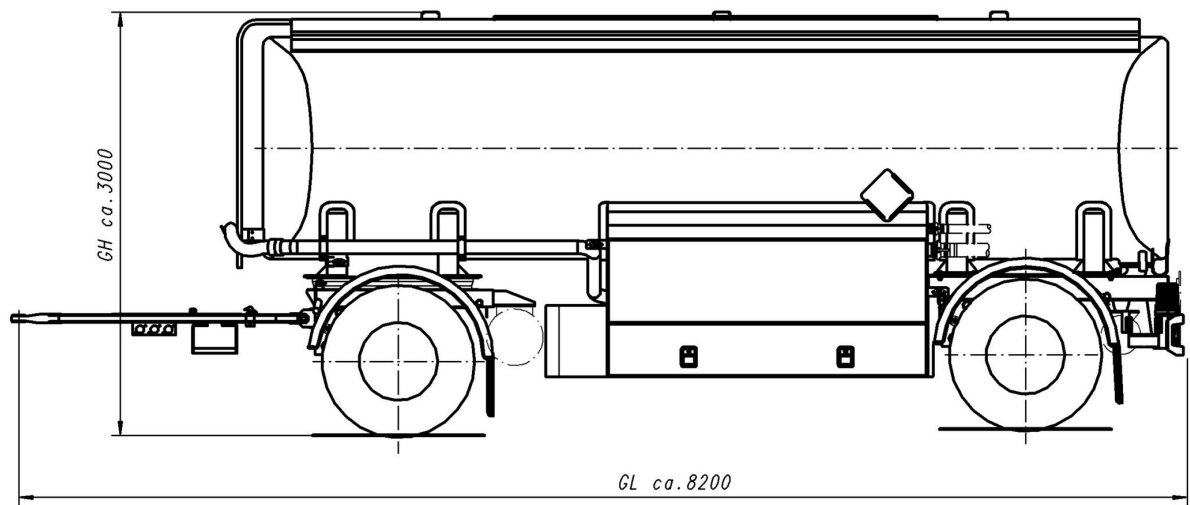
Structured and clear arrangement of fittings for efficient and fault-free operation



OPTIONAL: High-set LED light holder with optional integration of reversing camera



OPTIONAL: Choice of aluminium or steel bumper



GB = 2550