

3-axle sliding tarpaulin platform semitrailer with twin-level loading system



Produktvorteile und Optionals

- Twin-level loading system CTD III for 33 EURO pallets on 2nd level
- Load securing certified according to DIN EN 12642 XL for twin-level loading
- 6 load areas with a total of 22 aluminium load beams; load capacity: 400 kg per pallet
- Low corrosion, high-quality aluminium body components, tested according to EN 12642 XL
- Perforated external frame with approx. 100 mm hole spacing, 40/25 mm slot according to DIN EN 12640 and 23 pairs of recessed 2.5 t
- Installation of axles from well-known manufacturers such as SAF or BPW
- OPTIONAL: Manually operated hydraulic lifting roof, 400 mm elevation for rapid loading and unloading
- OPTIONAL: Variable load securing via bolt-on lashing systems (airline lashing rail, perforated combination impact protection)

Fahrzeugdetails

TYPE DESIGNATION

3-AXLE SLIDING TARPAULIN PLATFORM SEMITRAILER WITH TWIN-LEVEL LOADING SYSTEM

DIMENSIONS

Internal body dimension: approx. 13,620/2,480 mm Total width: 2,550 mm Load space internal height: approx. 2,720 mm Lateral loading height below guide rail: approx. 2,620 mm Internal width between guide rails: approx. 2,430 mm Portal loading height: approx. 2,620 mm Portal loading width: approx. 2,480 mm Loading height: approx. 125 mm over fifth-wheel height

FRAME

Welded steel frame construction Replaceable 2" kingpin, EC installation dimension, 23 pairs of recessed 2.5 t lashing points according to UVV

CHASSIS

Air suspension with lifting and lowering device (approx. +120/-80 mm) Automatic adjustment of driving level from 15 km/h Air suspension unit with low-maintenance disc brake axles, ø 430 mm, 3 x 9 t rigid, wheelbase 2 x 1,310 mm Tyres : 6 x 385/65 R 22.5 160J, manufacturer as per factory specifications 6 steel wheel rims 11.75 x 22.5, 10-hole, 120 mm rim offset, silver ex-works Spare wheel : 385/65 R 22.5 160J, manufacturer as per factory specifications Steel wheel rim 11.75 x 22.5, 10-hole, 120 mm rim offset, silver ex-works

SUPPORT FIXTURES

Mechan. 2 x 12 t support jacks, single-sided operation and thrust compensation

BRAKE SYSTEM

Brake system according to EC Directive 71/320 or ECE R13 Two-line brake EBS - electronic brake system Wabco 2S2M = one axle sensed RSS - stability program Spring-loaded parking brake on 2 axles Steel air tank

FLOOR

Resin-coated plywood floor, 27 mm, flush with external frame 2 steel top-hat rails over the longitudinal beams (floor load capacity 7 t, stacker axle load according to CSC)

ELECTRICAL EQUIPMENT

24 V lighting system according to EC Directive 76/756/EWG 2 seven-chamber tail lights in underride protection LED side marker lights 2 clearance lamps 2 contour lights on underride protection 2 x 7-pin and 1 x 15-pin socket

PAINTWORK

Blasted with steel granulate, treated with zinc dust primer and spray painted with 2-component acrylic paints for commercial vehicles Plastic and hot-dip galvanised parts unpainted, powder-coated attachments/installation parts black

ACCESSORIES

Rear markings as per ECE standards

ATTACHMENTS

Rear crash guard with corner post protection Wheel chock(s) as per regulations Single wheel plastic mudguards with spray protection as per regulations Aluminium underride protection, coated white Side impact protection made from aluminium profiles as per regulations, coated black 1 spare wheel bracket for 1 spare wheel (rear right) 1

plastic toolbox, lockable, unpainted, on left after axle

SIDE WALLS/SLIDING TARPAULIN

Fixed aluminium hollow profile front wall, 2,400 mm, with 2 centre supports, 2 lashing rings for load securing, closed with tarpaulin at top Front wall reinforced inside with galvanised steel plate, approx. 650 mm high Plastic sliding tarpaulins on both sides with load certification according to Code XL; welded horizontal and vertical strap reinforcements incl. direct turnbuckles (without strap) as well as front and rear bolt locks, openable on all 4 corners, with ratchet tensioner at rear, tarpaulin manufacturer as per factory specifications, tarpaulin colour according to availability
Aramid-reinforced plastic roof tarpaulin, translucent Without Carnet customs seal and without tarpaulin rope/brackets for load space closure Bolted portal at rear with aluminium corner posts, upper crossbeam with forward-sliding cover, incl. fully opening double door covering entire load space height, each leaf equipped with 2 internal espagnolettes.

POSTS/COVER - REINFORCED FOR TWIN-LEVEL LOADING SYSTEM

2 fixed aluminium corner posts at front, bolted, protruding from sides 10 reinforced centre posts, movable across entire length 2 rows of aluminium pointed slats, 100/25 mm, incl. Jungfalk slat pockets and with special guide heads for twin-level system Strap anchoring on front and rear corner posts, and strap cross-bracing on 2nd and 4th centre posts Versus sliding cover with plastic brackets, forward-sliding with automatic elevation, limited backward movement (opened from above) = pushed together in loading area, without inclination, with vertical and horizontal guide rollers = smooth operation Aluminium guide rail profile on both sides for sliding tarpaulins and posts, design height 140 mm Control rod for sliding tarpaulin (bracket on interior side protection)

TWIN-LEVEL LOADING SYSTEM

Height-adjustable twin-level loading system CTD III = 6 load areas for 11 x 3 EURO pallets 400 kg/pallet load capacity, 22 aluminium load beams with retainers, height-adjustable from approx. 780 to 1,870 mm from floor 2 locking beams on portal frame

CONTOUR MARKINGS

Reflective contour marking strips across entire length of sides and all-round contour marking at rear (white on sides and red at rear by default), according to ECE 48

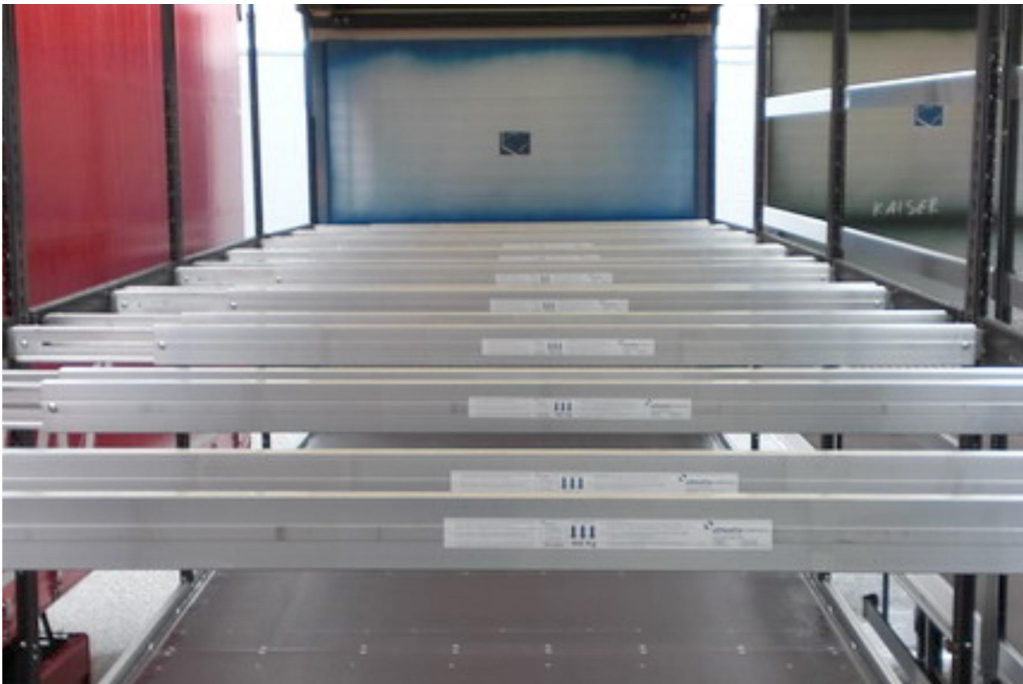
Impressionen



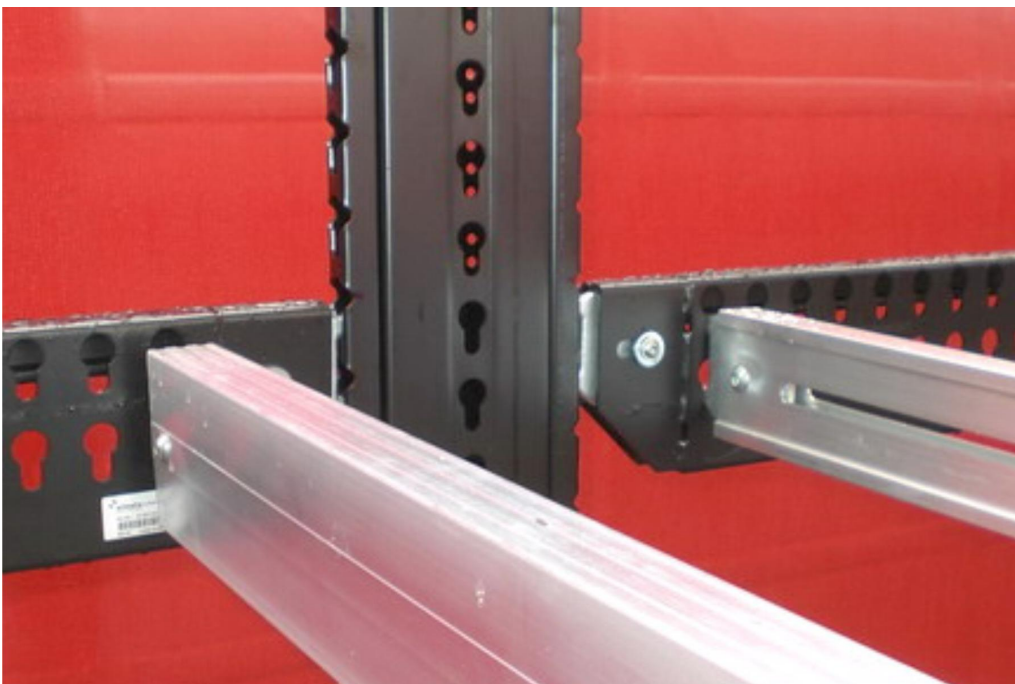
3-axle sliding tarpaulin platform semitrailer with twin-level loading system



Twin-level loading system CTD for 33 Euro pallets on the 2nd loading level



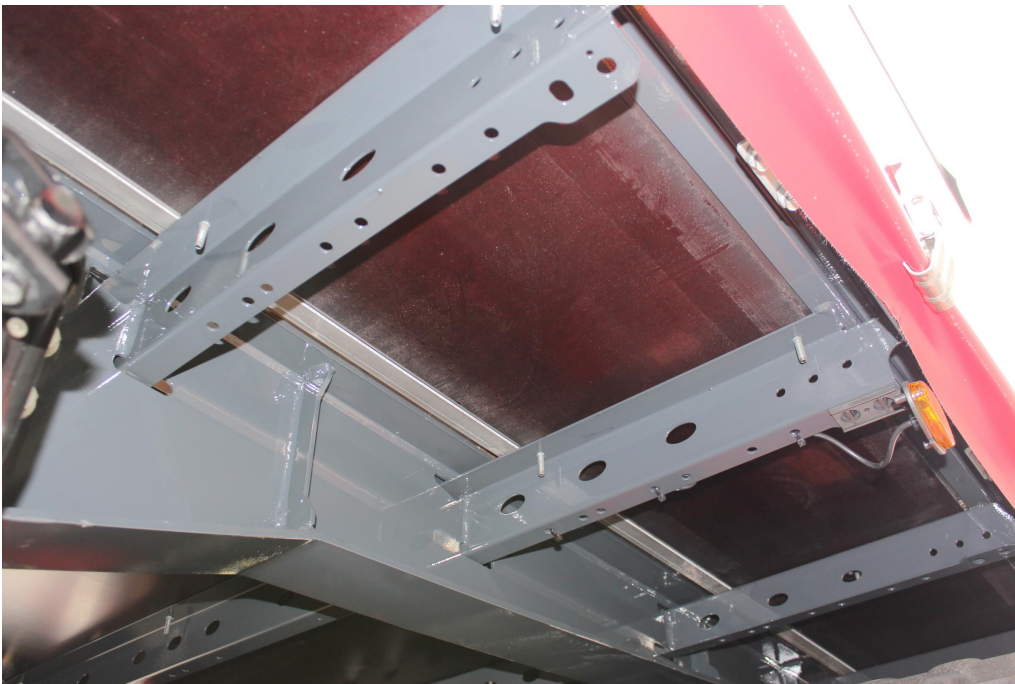
6 load areas with a total of 22 aluminium loading planks, load capacity 400 kg per pallet



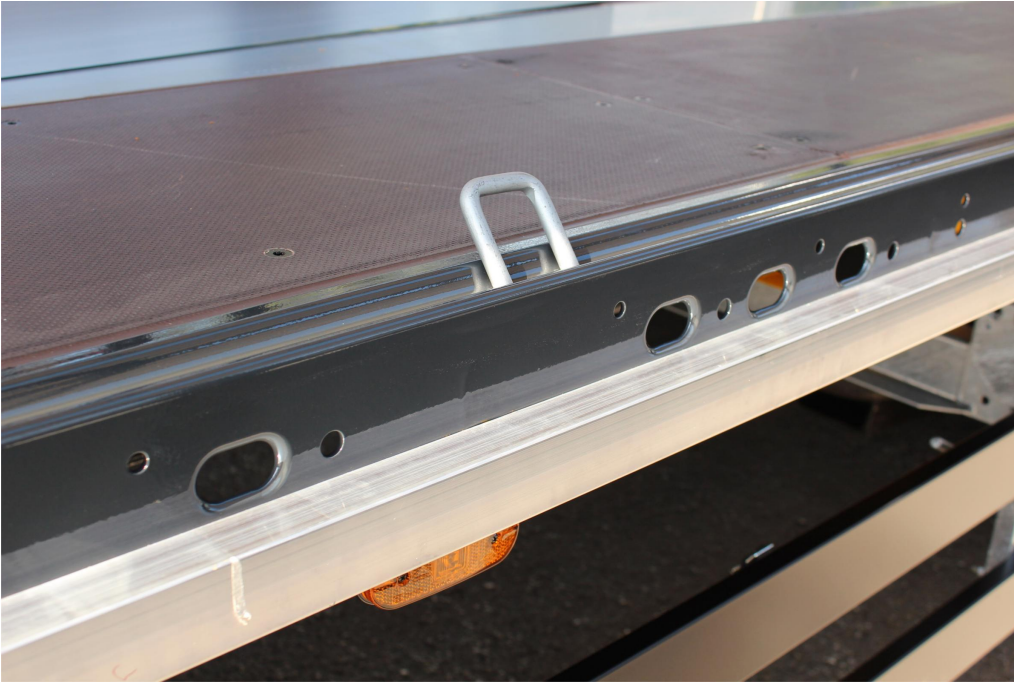
Height-adjustable clip-in pole brackets



Torsionally rigid, welded ladder frame structure



27-mm resin-coated panel floor, flush with external frame and with 2 steel top-hat profile rails above the side members (stacker axle load 7 t)



Perforated external frame with approx. 100 mm hole spacing, 40/25 mm slot according to DIN EN 12640 and 23 pairs of recessed 2.5 t



OPTIONAL: Manually operated hydraulic lifting roof, 400 mm elevation for rapid loading and unloading

