

# 3-axle platform semitrailer



## Produktvorteile und Optionals

- Torsionally rigid, welded ladder frame structure
- Reinforced aluminium hollow profile front wall with integrated equipment bracket
- Aluminium hollow profile rear wall, 800 mm high, foldable, with 2 integrated folding supports
- External frame with 23 pairs of recessed 2.5 t lashing points for load securing
- Suitable for TIR customs sealing
- Installation of axles from well-known manufacturers such as SAF or BPW
- OPTIONAL: Portal frame with double door - bolted portal at rear with fully opening double door in aluminium profile design
- OPTIONAL: 2-leaf rear wall, 800 mm high - split rear wall with espagnolette, both door leafs fully opening, fixation via door stays
- OPTIONAL: Anodised aluminium stacker protection strips on both sides of external frame
- OPTIONAL: Aluminium omega profiles in floor instead of steel - weight optimisation
- OPTIONAL: RULASI = post-based load securing system with various rack positions

# Fahrzeugdetails

## TYPE DESIGNATION

3-AXLE PLATFORM SEMITRAILER RH125 P

---

## WEIGHTS

Gross train weight (perm.): 40 t

Gross weight (techn.): 39 t

Axle assembly load (techn.): 27 t

Fifth-wheel load (techn.): 12 t

Tare weight: approx. 6. 2 t

---

## DIMENSIONS

Internal platform length: approx. 13,620 mm

Internal platform width: approx. 2,480 mm

Total width: 2,550 mm

Load space internal height: approx. 2,710 mm

Lateral loading height: approx. 2,650 mm

Rear loading height: approx. 2,710 mm

Loading height: approx. 125 mm over fifth-wheel height

---

## FRAME

Welded steel frame construction

Frame for unladen fifth-wheel height of 1,090 - 1,190 mm with air-sprung STT

Replaceable 2" kingpin (EC installation dimension,

width across corners: 2,040 mm)

23 pairs of recessed 2.5 t lashing points according to UVV

---

## **CHASSIS**

Air suspension with lifting and lowering device (approx. +120/-80 mm)

air suspension unit with low-maintenance 430 mm disc brake axles

3 x 9 t rigid, wheelbase 2 x 1,310 mm

Tyres :

6 x 385/65 R 22.5 160J, manufacturer as per factory specifications

6 steel wheel rims 11.75 x 22.5, 10-hole, 120 mm rim offset, silver

---

## **SUPPORT FIXTURES**

Mechan. 2 x 12 t support jacks, single-sided operation and thrust compensation,  
manufacturer as per factory specifications

---

## **BRAKE SYSTEM**

Brake system according to EC Directive 71/320 or ECE R13

Two-line brake

EBS - electronic brake system

Wabco 2S2M = one axle sensed

RSS - stability program

Spring-loaded parking brake on 2 axles

Steel air tank

---

## **FLOOR**

Resin-coated plywood floor, 27 mm, flush with external frame

2 steel top-hat rails over the longitudinal beams

(floor load capacity 7 t, stacker axle load according to CSC)

---

## **SIDE WALLS**

Fixed aluminium hollow profile front wall, 2,000 mm, with 2 centre supports,

2 lashing rings inside for load securing

Front wall reinforced inside with galvanised steel plate,

approx. 650 mm high

4-part aluminium hollow profile side walls 800/25 mm with rubber seal and bracket recess for tarpaulin overhang (360 mm), customs-compliant with tarpaulin brackets, foldable with latch-type tension locks 681-S1

Foldable aluminium hollow profile rear wall, 800 mm high, with rubber seal and bracket recess, customs-compliant with tarpaulin brackets, with latch-type tension locks 681-S1

2 folding steps

---

## **POSTS/COVER/TARPAULIN**

2 front corner posts, bolted, protruding from sides, 2,300 mm high

6 foldable centre posts, split

2 rear corner posts, bolted to sides, 2,300 mm high

5 rows of softwood slot-in slats, 100/27 mm, in pockets,

200 mm spacing

1 slat at front

Edscha sliding tarpaulin frame, forward-sliding = pushed together in loading area, design height 95 mm

Edscha control rod, adjustable (bracket on interior side protection)

Tarpaulin made from high-strength Trevira fabric with translucent roof, incl. tarpaulin rope and assembly, tarpaulin manufacturer as per factory specifications, tarpaulin colour according to availability

---

## **ELECTRICAL EQUIPMENT**

24 V lighting system according to EC Directive 76/756/EWG

2 seven-chamber tail lights in underride protection

LED side marker lights

2 clearance lamps

2 contour lights on underride protection

2 x 7-pin and 1 x 15-pin socket

---

## **PAINTWORK**

Blasted with steel granulate, treated with zinc dust primer and spray painted with 2-component acrylic paints for commercial vehicles (standard RAL or truck colour)

Plastic and hot-dip galvanised parts unpainted,

powder-coated attachments/installation parts black

Reflective contour marking strips across entire length of sides and all-round contour marking at rear (white on sides and red at rear by default), according to ECE 48

---

## **ACCESSORIES**

Rear markings as per ECE standards (horizontal on rear doors/rear wall)

## **ATTACHMENTS**

Rear crash guard with corner post protection

Wheel chock(s) as per regulations

Single wheel plastic mudguards with spray protection as per regulations

Aluminium underride protection, coated white

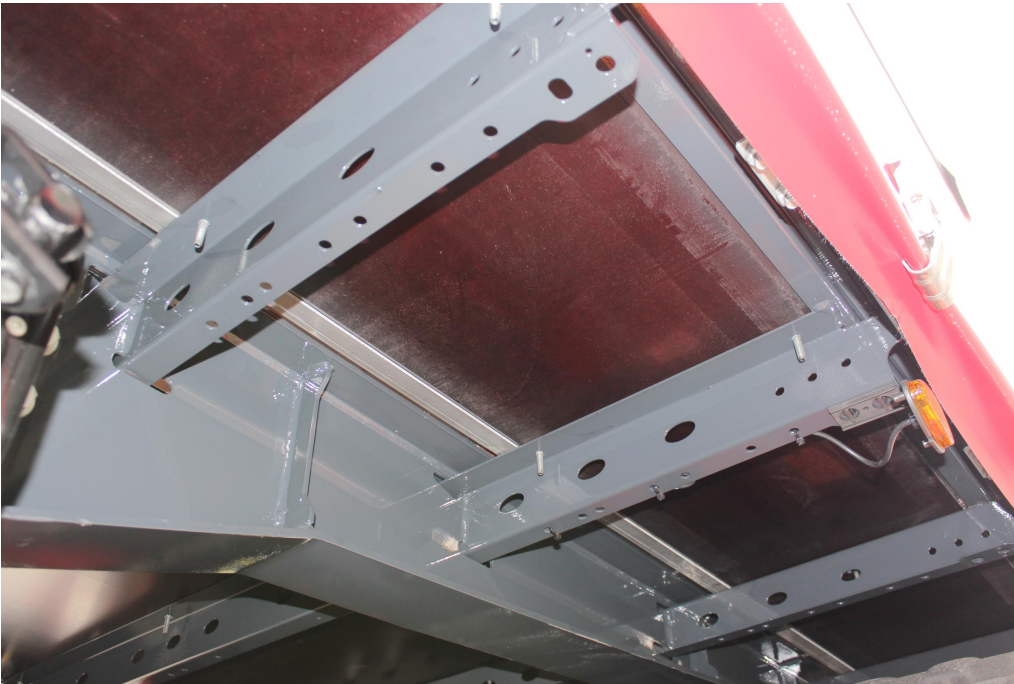
Side impact protection made from aluminium profiles as per regulations, coated black

1 spare wheel bracket for 1 spare wheel (rear right)

1 plastic toolbox, lockable, unpainted , on left after axle

---

## Impressionen



27-mm resin-coated panel floor, flush with external frame and with 2 steel top-hat profile rails above the side members (stacker axle load 7 t)



External frame with 23 pairs of recessed 2.5 t lashing points for load securing





OPTIONAL: Wabco SmartBoard for reading data on vehicle display (mileage, axle assembly load, brake diagnostics etc.)

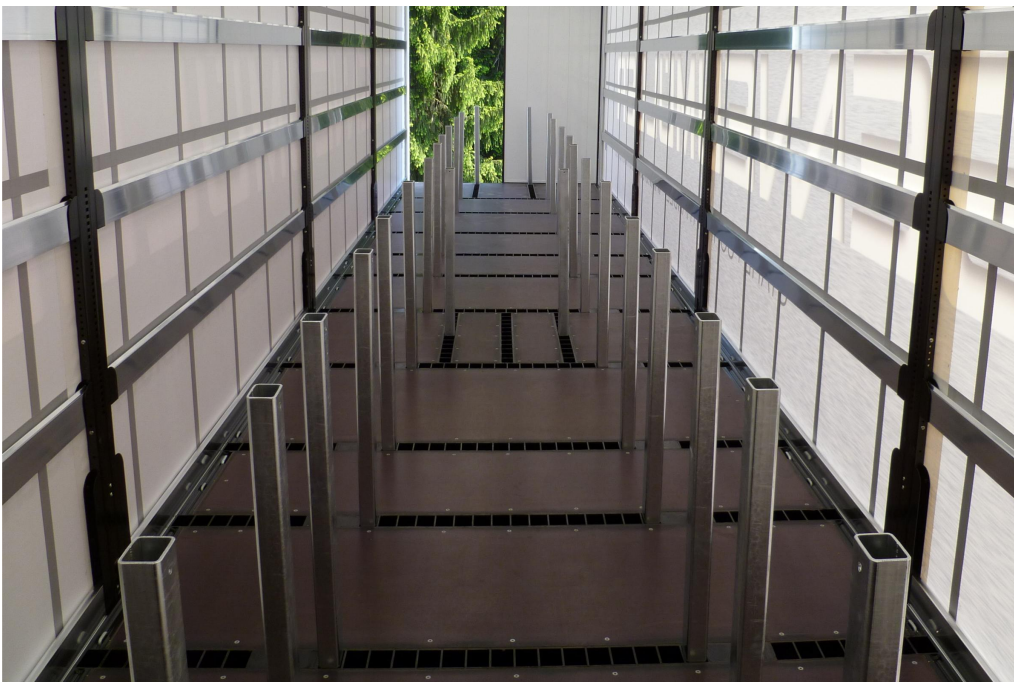


3-axle platform semitrailer





OPTIONAL: Portal frame with double door - bolted portal at rear with fully opening double door in aluminium profile design



OPTIONAL: RULASI = post-based load securing system with various rack positions



Reinforced aluminium hollow profile front wall with integrated equipment bracket



Torsionally rigid, welded ladder frame structure

