

3-way tipper body for 2A truck - building site



Produktvorteile und Optionals

- Insulated hollow chamber body for slow cooling, freezing and adhesion of load
- Tipper body construction using conical, trapezoidal profile side members in high-strength, lightweight design with small bottom panels for high dent resistance and shock absorption
- Torsionally rigid, weight-optimised subframe construction
- Hard chrome-plated, high-quality tilt cylinder
- OPTIONAL: Bordmatic (= hydraulically folding side wall) on left side
- OPTIONAL: Reinforced side walls with material-repellent membrane construction made from fine-grained special steel panels
- OPTIONAL: Electropneumatic side wall locking with switch operation in cab
- OPTIONAL: Aluminium flap on lateral central locking shaft
- OPTIONAL: Foldable lashing rings
- OPTIONAL: Foldable aluminium underride protection for road-finishing use
- OPTIONAL: Front and rear crane mounting with reinforced subframe

Fahrzeugdetails

TYPE DESIGNATION

3-WAY TIPPER BODY ON 2-AXLE TRUCK - BUILDING SITE For handling bulk materials such as sand, gravel, rubble, ground excavation etc. on building sites

WEIGHTS

Body weight: approx. 1.7 t

DIMENSIONS

Internal length: approx. 4,500 mm Internal width: approx. 2,420 mm Load volume: approx. 7.5 m³ Total width: 2,550 mm Body height, loading height etc. can only be checked and announced upon specification of the exact truck data

PAINTWORK

Blasted with steel granulate, treated with zinc dust primer and spray painted 2-component acrylic paints for commercial vehicles (standard RAL or truck colour) Plastic and hot-dip galvanised parts unpainted, powder-coated attachments black Reflective contour marking strips across entire length of sides (continuing onto truck cab) and all-round contour marking at rear (white on sides and red at rear by default), according to ECE 48

ACCESSORIES

Rear markings as per ECE standards

ATTACHMENTS

Tipper body rubber centre support Bracket for wheel chock(s) Mud flaps for rear mudguards Shovel and brush brackets Rubber skirting on side walls on both sides Rubber bump stops on end plate Hooks for dosing chains on swivelling rear wall

SIDE WALLS

Fixed steel plate front wall, 3 mm, approx. 980 mm high 1-part reinforced aluminium hollow profile side walls, 60/4/3 mm, approx. 680 mm high, foldable with extended swivel bolt locks and spring lifting aid, hinged with man. central locking Aluminium hollow profile rear wall, 60/4/3 mm, approx. 780 mm high, hinged with raised bearing and pneum. locking opened from cab, foldable with extended swivel bolt locks Fixed rear corner posts, raised, side-mounted

SUBFRAME

Continuous side members with tilt cylinder bearings and outriggers Body height above chassis: approx. 400 mm Connector lock for tipper body with cross-over protection

HIGH-PRESSURE HYDRAULIC TIPPING SYSTEM

16 t tilt cylinder for 3-way tipping, with safety rope, 40 l pump for direct flange mounting, 35 l oil reservoir with oil filling, pneum. tip valve with overpressure protection and actuation in cab

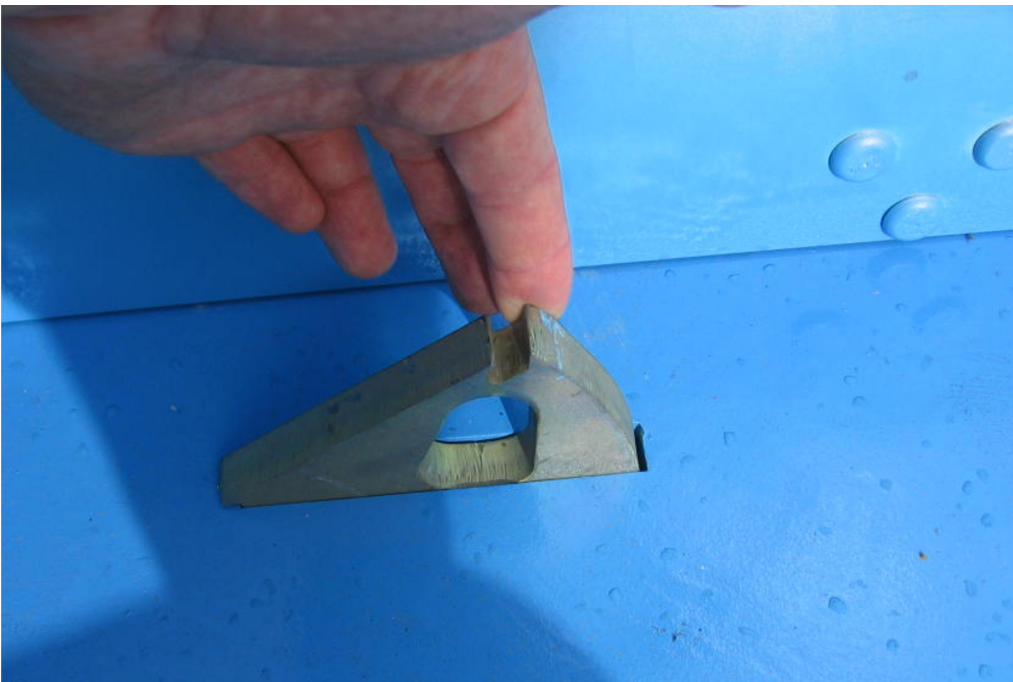
TIPPING LOADING RAMP

Full-steel welded construction with fine-grained special steel floor panels, 5 mm HARDOX HB450 (slight floor unevenness possible due to weld distortion)

Impressionen



3-way tipper body on 2-axle truck - building site



OPTIONAL: Foldable lashing rings



Hard chrome-plated, high-quality tilt cylinder



Tipper body design with conical trapezoidal profile side members in high-strength, lightweight design with small bottom panels for high dent resistance and shock absorption



OPTIONAL: Bordmatic (= hydraulically folding side wall) on left side

