

# 3-axle 3-way tipper semitrailer - long-haul transport



## Product benefits

- Stable and torsionally rigid chassis construction with additional torsion tubes for 3-way tipping
- Automatic rear wall locking
- Installation of axles from well-known manufacturers such as SAF or BPW
- OPTIONAL: 2 mechanical steel support winches with rollers at frame end
- OPTIONAL: Plastic roller tarpaulin incl. aluminium pole and hand crank
- OPTIONAL: Electropneumatic side wall locking with switch operation in cab
- OPTIONAL: Foldable lashing rings
- OPTIONAL: Aluminium flap on lateral central locking shaft
- OPTIONAL: Standing platform comprising aluminium safety grid with guardrail and step unit at front wall
- OPTIONAL: sliding tarpaulin frame
- OPTIONAL: Grain-tight side wall mounting with labyrinth sealing system

## Product details

### TYPE DESIGNATION

3-AXLE 3-WAY TIPPER SEMITRAILER - LONG-HAUL TRANSPORT

For pallet and grain transport etc.

---

### DIMENSIONS

Internal length: approx. 13,400 mm

Internal width: approx. 2,460 mm

Internal height: approx. 2,200 - 2,400 mm

Total width: 2,550 mm

Total height, unladen: approx. 3,800 - 4,000 mm

Loading height: approx. 325 mm over fifth-wheel height

---

### FRAME

Naxtra welded steel frame construction - low design height

Connector lock for tipper body with cross-over protection

Replaceable 2" kingpin

---

### CHASSIS

Air suspension with autom. lowering device via inductive switch and lowering lock via rotary switch on semitrailer

air suspension unit with low-maintenance 430 mm disc brake axles, 3 x 9 t rigid, wheelbase 2 x 1,310 mm

Tyres :

6 x 385/65 R 22.5 160J, manufacturer as per factory specifications

6 steel wheel rims 11.75 x 22.5, 10-hole, with rim offset, silver

---

### **SUPPORT FIXTURES**

Mechan. 24 t support jacks with single-sided operation, low-maintenance

---

### **BRAKE SYSTEM**

Brake system according to EC Directive 71/320 or E CE R13

Two-line brake

Spring-loaded parking brake on 2 axles

EBS - electronic brake system

Wabco 2S2M = one axle sensed

RSS - stability program

Steel air tank

---

### **TIPPING SYSTEM**

2 special tipper cylinders for 3-way tipping, installed in series

1 arrester cable

Rearward tipping angle: approx. 34°

1 pipe system with screw coupling DN20

---

### **ELECTRICAL EQUIPMENT**

24 V lighting system according to EC Directive 76/756/ EWG

2 seven-chamber tail lights in underride protection

LED side marker lights

2 clearance lamps

2 contour lights

2 x 7-pin / 1 x 15-pin socket

---

## **PAINTWORK**

Blasted with steel granulate, treated with zinc dust primer and spray painted 2-component acrylic paints for commercial vehicles (standard RAL or truck colour)

Plastic and hot-dip galvanised parts unpainted,  
powder-coated attachments/installation parts black

Reflective contour marking strips across entire length of sides and all-round contour marking at rear (white on sides and red at rear by default), according to ECE 48

---

## **ATTACHMENTS**

Wheel chock(s) as per regulations

Noise dampers

Single wheel plastic mudguards with spray protection as per regulations

Side impact protection

Aluminium underride protection, coated white

1 spare wheel bracket for 1 spare wheel

1 integrated level gauge (to check horizontal position during rearward tipping)

---

## **WEIGHTS**

Gross train weight (perm.): 40 t

Gross weight (techn.): 39 t

Axle assembly load (techn.): 27 t

Fifth-wheel load (techn.): 12 t

Payload: approx. 25 t

Tare weight: approx. 8, 9 t

## **TIPPING LOADING RAMP**

Full-steel welded construction with fine-grained special steel floor panels, 5 mm  
(slight floor unevenness possible due to weld distortion)

---

## **SIDE WALLS**

Grain-tight side wall mounting with labyrinth sealing system

Fixed steel plate front wall, 3 mm, approx. 1,700 mm high

3-part reinforced aluminium hollow profile side walls, 40 mm, approx. 780 mm high, (top and bottom profiles reinforced 4/2 mm, 2 x 200 mm intermediate profiles 2/2 mm), with vertical special sealing groove and bracket recess for tarpaulin overhang (360 mm), without tarpaulin brackets, foldable with extended swivel bolt locks and hinged with man. central locking (operated separately for each wall)

Aluminium hollow profile rear wall, 40 mm, approx. 780 mm high, foldable with extended swivel bolt locks and hinged with man. central locking

---

## **POSTS/COVER**

2 fixed front corner posts, integrated in front wall, 2,000 mm high

4 foldable centre posts, 2,000 mm high (split approx. at side wall height,  
lower section foldable, upper section removable with roof rack support)

Tension chain with fastener for centre posts

2 fixed rear corner posts, 2,000 mm high, welded to sides

4 rows of softwood slot-in slats, 100/27 mm, in pockets, 200 mm spacing

1 slat at front

Tarpaulin bows with 7 rows of roof poles and transverse bows for pillars, without inclination  
(crane and stacker loading)

---

## **ACCESSORIES**

Rear markings as per ECE standards



## Product impressions



3-axle 3-way tipper semitrailer - long-haul transport

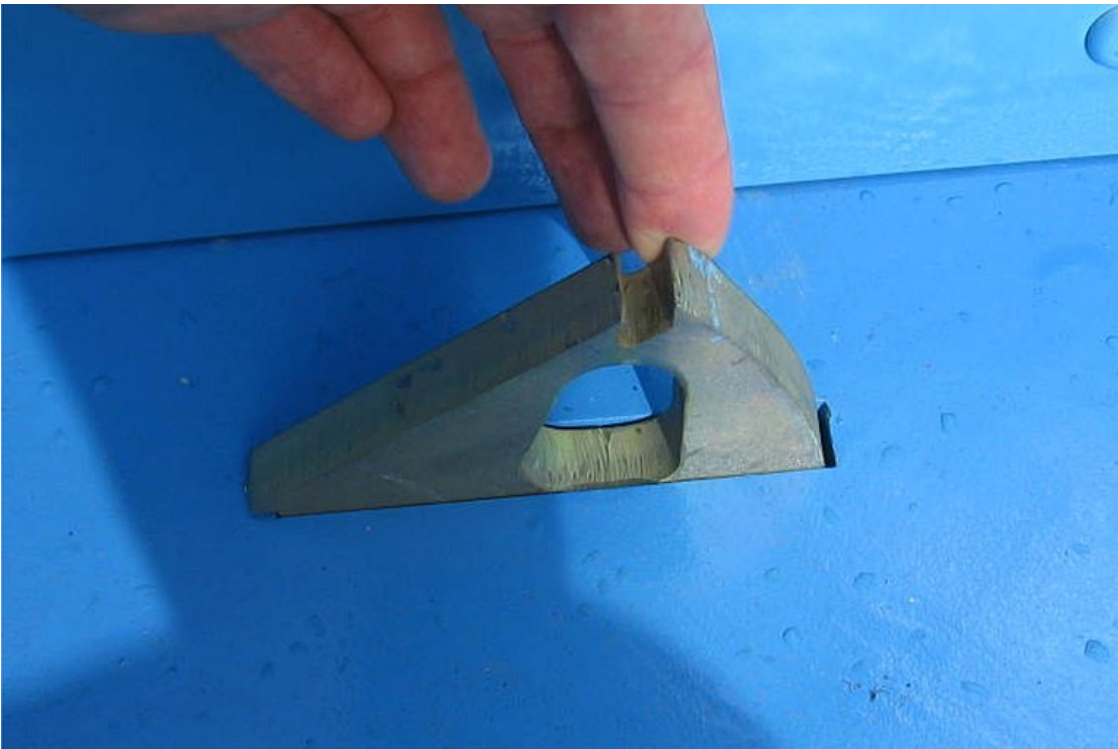


OPTIONAL: 2 mechanical support winches with rollers at frame end





OPTIONAL: Aluminium flap on lateral central locking shaft



OPTIONAL: Foldable lashing rings





Stable and torsionally rigid chassis design with additional torsion tubes for 3-way tipping



Manual central locking to open the side walls using a lever and central locking shaft



Fixed steel sheet front wall, 3 mm



Aluminium hollow profile rear wall, folding with extended swivel bolt locks and hinged with man. central locking

