

3-axle platform semitrailer prepared for mobil crane



Product benefits

- Reinforced frame construction for inrunner mobile crane with 16 mt
- Mechanical "Tridec" fifth-wheel forced steering for 3rd semitrailer axle
- Weather-resistant larch wood floor, lengthwise with small joints
- Perforated external frame with approx. 100 mm hole spacing, 50/30 mm slot, for lashing 2 t
- Installation of axles from well-known manufacturers such as SAF or BPW
- OPTIONAL: Reinforced for inrunner mobile crane up to 24 mt
- OPTIONAL: 2. + 3. Semitrailer axle with mechanical "Tridec" forced steering
- OPTIONAL: Foldable crane track extension, approx. 530 mm
- OPTIONAL: Reinforced body with load securing certified according to DIN EN 12642 Code XL
- OPTIONAL: Resin-coated floor with additional non-slip coating - certified
- OPTIONAL: Recessed central lashing rail across entire length of floor with integrated holes suitable for lashing straps

Product details

TYPE DESIGNATION

3-AXLE PLATFORM SEMITRAILER PREPARED FOR MOBIL CRANE

DIMENSIONS

Internal platform length: approx. 13,500 mm

Internal platform width: approx. 2,480 mm

Total width: 2,550 mm

Loading height: approx. 280 mm over fifth-wheel height

FRAME

Lightweight welded steel frame construction (Naxtra), reinforced for 16 mt inrunner mobile crane

Replaceable 2" kingpin (EC installation dimension, width across corners: 2,040 mm)

Perforated external frame with approx. 100 mm hole spacing - for lashing

CHASSIS

Air suspension with lifting and lowering device (approx. +120/-80 mm)

Automatic adjustment of driving level from 15 km/h

Air suspension unit with low-maintenance 430 mm disc brake axles (large disc), 3 x 9 t,

1st + 2nd axles rigid

3rd axle with bogie assembly for forced steering

Tyres :

6 x 385/65 R 22.5 160K, manufacturer as per factory specifications

6 steel wheel rims 11.75 x 22.5, 10-hole, 120 mm rim offset, silver

SUPPORT FIXTURES

Mechan. 2 x 12 t support jacks, single-sided operation and thrust compensation

BRAKE SYSTEM

Brake system according to EC Directive 71/320 or ECE R13

Two-line brake

EBS-E - electronic brake system (Wabco 2S2M = 2nd axle sensed)

RSS - stability program

Spring-loaded parking brake on 2 axles

Steel air tank

FLOOR

Larch wood floor, 35 mm, lengthwise, with small joints and steel edge,

bolted using 8 mm countersunk bolts incl. nuts.

Service cover at front above steering, bolted with countersunk screws at corners

SIDE WALLS

Fixed, reinforced aluminium hollow profile front wall, 1,400 mm, mounted on front end, with 2 reinforced centre supports and upper edge profile, inside of front wall fully reinforced with aluminium chequer plate, 3/5 mm, with 1 pair of folding steps on outside of front wall mounted on left in direction of travel.

5-part aluminium hollow profile side walls, 1,000/25 mm high, with vertical and horizontal rubber seal and internally riveted frame, without bracket recess, foldable with Kinnegrip double locking

4 pairs of folding steps, on both sides of 2nd and last side wall, in each case recessed in rear area.

Reinforced, aluminium hollow profile rear wall, 1,000 mm high, with upper edge profile, vertical and horizontal rubber seal, internally riveted frame, without bracket recess, foldable with Kinnegrip

double locking

ELECTRICAL EQUIPMENT

24 V lighting system according to EC Directive 76/756/EWG

2 seven-chamber tail lights in underride protection

LED side marker lights

2 clearance lamps

2 contour lights on underride protection

2 x 7-pin and 1 x 15-pin socket

PAINTWORK

Blasted with steel granulate, treated with zinc dust primer and spray painted with 2-component acrylic paints for commercial vehicles

Plastic and hot-dip galvanised parts unpainted,

powder-coated attachments/installation parts black

ACCESSORIES

Rear markings as per ECE standards

ATTACHMENTS

Rear crash guard with corner post protection

Anodised aluminium stacker protection strips on both sides of external frame

Wheel chock(s) as per regulations

Single wheel plastic mudguards with spray protection as per regulations

Aluminium underride protection, coated white

Side impact protection made from aluminium profiles as per regulations, coated black

1 spare wheel bracket for 1 spare wheel

1 plastic toolbox, lockable, unpainted

CONTOUR MARKINGS

Reflective contour marking strips across entire length of sides and all-round contour marking at rear (white on sides and red at rear by default), according to ECE 48

STEERING

"TRIDEC" fifth-wheel steering linkage for 3rd trailer axle only = automatic forced steering via fifth-wheel coupling/kingpin with steering wedge and ball bearing turntable

Axle assembly with bogie and ball bearing turntable for 3rd axle, lubricating nipples easily accessible, i.e. with lubrication strip on outside front left and lubrication strip on bogie

POSTS

Integrated extended lever locks, Kinnegrip system

2 reinforced front corner posts, bolted to front, in front wall height

8 reinforced Kinnegrip centre posts, foldable and removable, in side wall height

2 rear reinforced Kinnegrip corner posts, foldable and removable, side-mounted, in side wall height

Product impressions



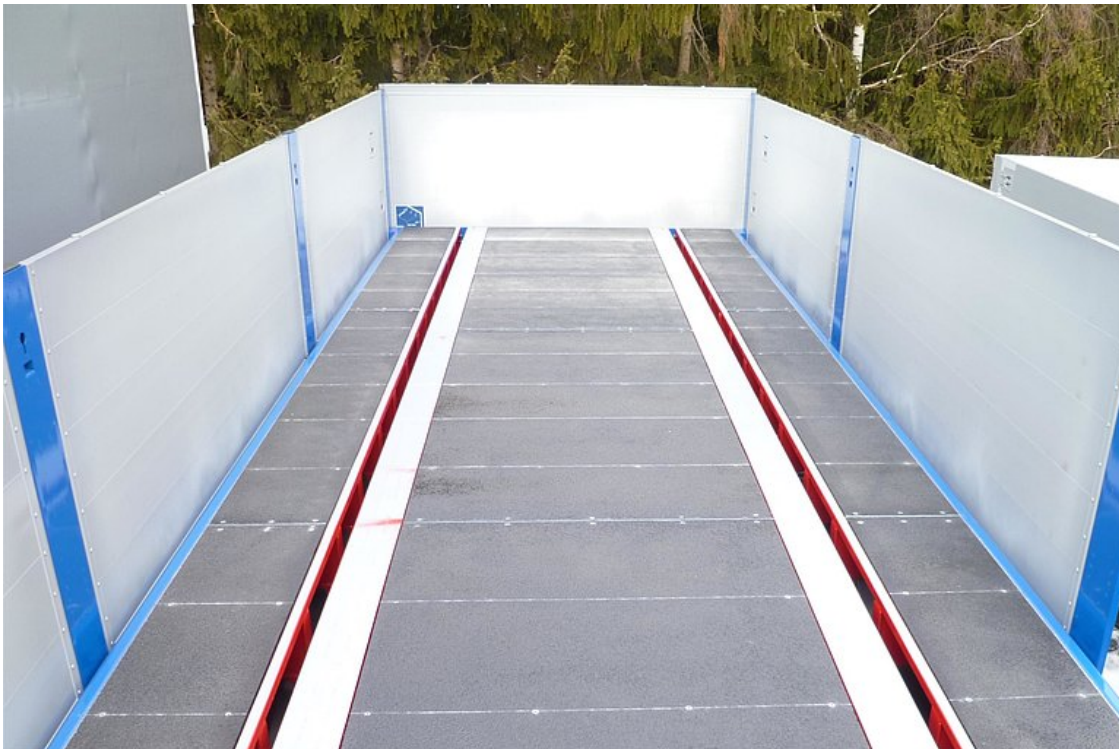
3-axle platform semitrailer with/for mobile crane



Fixed, reinforced aluminium hollow profile front wall



Reinforced, aluminium hollow profile rear wall, 1,000 mm high



OPTIONAL: Resin-coated flooring with non-slip coating - certified



2 slide-out supports for rear wall (non-load-bearing)



3. Semitrailer axle with mechanical forced steering



Perforated external frame with approx. 100 mm hole spacing, 50/30 mm slot, for securing 2 t



5 t lashing rings that can be folded up, installed horizontally in outer frame, can also be folded outwards

