

# 3-axle mega sliding tarpaulin platform semitrailer coil



## Product benefits

- Low corrosion, high-quality aluminium body components, tested according to EN 12642 XL
- Reinforced frame construction for coil transports of 27 t at centre of gravity across minimum 2,000 mm load length
- Coil recess with useful length of approx. 7,400 mm, with 5 pairs of integrated racks, for coil diameters up to 2,100 mm
- Stacker-bearing recess cover made from 27 mm resin-coated plywood with trussing
- Perforated external frame (starting approx. 3,000 mm from front wall) with approx. 100 mm hole spacing, 40/25 mm slot according to DIN EN 12640 and 20 pairs of recessed 2.5 t lashing points/rings, and an additional 5 pairs of 4 t lashing points in the recess area on the external frame
- Internal height extendible by 60 mm via lifting roof, thus providing greater load height
- Manually operated hydraulic lifting roof, 400 mm elevation for loading and unloading
- Installation of axles from well-known manufacturers such as SAF or BPW
- OPTIONAL: Coil recess with longitudinal reinforcement braces for slit strips

## Product details

### TYPE DESIGNATION

3-AXLE LIGHTWEIGHT LARGE-SCALE SLIDING TARPAULIN PLATFORM  
SEMITRAILER RH40 - COIL

For transporting lattice box pallets according to DIN 15155

---

### WEIGHTS

Gross train weight (perm.): 40 t

Gross weight (techn.): 39 t

Axle assembly load (techn.): 27 t

Fifth-wheel load (techn.): 12 t

Tare weight: approx. 7.4 t

---

### DIMENSIONS

Internal platform length: approx. 13,620 mm

Internal platform width: approx. 2,480 mm

Total width: 2,550 mm

Load space internal height: approx. 3,010 mm

Lateral loading height below guide rail: approx. 2,855 mm

Internal width between guide rails: approx. 2,490 mm

Portal loading height: approx. 2,910 mm

Portal loading width: approx. 2,480 mm

Loading height: approx. 40 mm over fifth-wheel height

---

### FRAME

Lightweight welded steel frame construction in special low design, reinforced for point loading = coil transport (27 t at centre of gravity across min. 2,000 mm length)

Frame with wheel housings over wheels

Replaceable 2" kingpin (EC installation dimension,  
width across corners: 2,040 mm)

Perforated external frame (starting approx. 3,000 mm from front wall) with approx. 100 mm hole spacing, 40/25 mm slot according to DIN EN 12640 and 20 pairs of recessed 2.5 t lashing points/rings, and an additional 5 pairs of 4 t lashing points in the recess area on the external frame

---

## **CHASSIS**

Air suspension with lifting and lowering device, approx. 250 mm (approx. +180/-70 mm)

Automatic adjustment of driving level from 15 km/h

air suspension unit with low-maintenance 370 mm disc brake axles

3 x 9 t rigid, wheelbase 2 x 1,310 mm

Tyres :

6 x 435/50 R 19.5 160J, Goodyear Fuelmax T

6 steel wheel rims 14.00 x 19.5, 10-hole, with rim offset, silver

---

## **SUPPORT FIXTURES**

Mechan. 2 x 12 t special support jacks, single-sided operation and thrust compensation,  
manufacturer as per factory specifications

---

## **BRAKE SYSTEM**

Brake system according to EC Directive 71/320 or E CE R13

Two-line brake

EBS - electronic brake system

Wabco 2S2M = one axle sensed

RSS - stability program

Spring-loaded parking brake on 2 axles

Aluminium air tank

---

## **FLOOR**

Up to approx. 3,400 mm length at front made from 30 mm resin-coated plywood, followed by 27 mm resin-coated plywood to frame end, flush with external frame

---

## **ELECTRICAL EQUIPMENT**

24 V lighting system according to EC Directive 76/756/E WG

2 seven-chamber tail lights in underride protection

LED side marker lights

2 clearance lamps

2 contour lights on underride protection

2 x 7-pin and 1 x 15-pin socket

---

## **PAINTWORK**

Blasted with steel granulate, treated with zinc dust primer and spray painted with 2-component acrylic paints for commercial vehicles (standard RAL or truck colour)

Plastic and hot-dip galvanised parts unpainted,  
powder-coated attachments/installation parts black

Reflective contour marking strips across entire length of sides and all-round contour marking at rear (white on sides and red at rear by default), according to ECE 48

---

## **ACCESSORIES**

Rear markings as per ECE standards (horizontal on rear doors/rear wall)

---

## **ATTACHMENTS**

- Rear crash guard with portal post protection and lower post reinforcement
- Wheel chock(s) as per regulations
- 1 x retractable step unit at rear right
- 12 short plastic mudguards with spray protection according to Austrian regulations
- Aluminium tarpaulin mounting strips bolted on both sides of external frame
- Aluminium underride protection, coated white
- Side impact protection made from aluminium profiles as per regulations, coated black
- 1 spare wheel bracket for spare semitrailer wheel (on right after axle)
- 1 plastic toolbox, lockable, unpainted , on left after axle

---

## **SIDE WALLS/SLIDING TARPAULIN**

- Fixed aluminium hollow profile front wall, 2,550 mm, with 2 centre supports,
- 2 lashing rings inside for load securing
- Closed with tarpaulin over front wall, in same colour as side tarpaulin
- Front wall reinforced inside with galvanised steel plate, approx. 650 mm high
  
- Plastic sliding tarpaulins on both sides with load certification according to Code XL; welded horizontal and vertical strap reinforcements incl. turnbuckles as well as front and rear bolt locks, openable on all 4 corners, with ratchet tensioner at rear,
- tarpaulin sealed against external frame,
- tarpaulin manufacturer as per factory specifications, tarpaulin colour according to availability
- Aramid-reinforced plastic roof tarpaulin, translucent
  
- Bolted portal at rear with aluminium corner posts, upper crossbeam with forward-sliding cover, incl. fully opening double door in profile design covering entire load space height, each leaf equipped with 2 internal espagnolettes

## COIL RECESS

Useful length: approx. 7,400 mm - standard version according to VDI 2700 for coil diameters of 900 to max. 2,100 mm,

with stacker-bearing cover made from 27 mm resin-coated plywood with trussing

4 pairs of racks = 1 x at front, 1 x approx. 1,540 mm, 1 x 3,380 mm, 1 x 5,030 mm, incl. 2 pairs of tubular safety supports, 90 x 90 x 4 mm, useful height: approx. 1,700 mm

Inclinations on both sides made from 24 mm resin-coated plywood

---

## POSTS/COVER

2 fixed aluminium corner posts at front, bolted, protruding from sides

3 centre posts on left in direction of travel, movable across entire length, for lifting roof incl. Expander lifting aid

3 centre posts on right in direction of travel, movable across entire length, for lifting roof incl. Expander lifting aid

3 additional post pockets on both sides

4 rows of slat pockets, 1st pocket row at bottom 460 mm, spacing approx. 160/600/600 mm, with 4 rows of aluminium pointed slats 100/25 mm

Manually operated hydraulic lifting roof, 400 mm elevation, with lever operation on corner posts, for loading and unloading (portal doors must be opened)

Versus sliding cover with plastic brackets, forward-sliding with automatic elevation = pushed together in loading area, with vertical and horizontal guide rollers = smooth operation

Aluminium pallet guide rail profile on both sides for sliding tarpaulins and posts, design height 195 mm

Control rod for sliding tarpaulin (bracket on interior side protection)

---

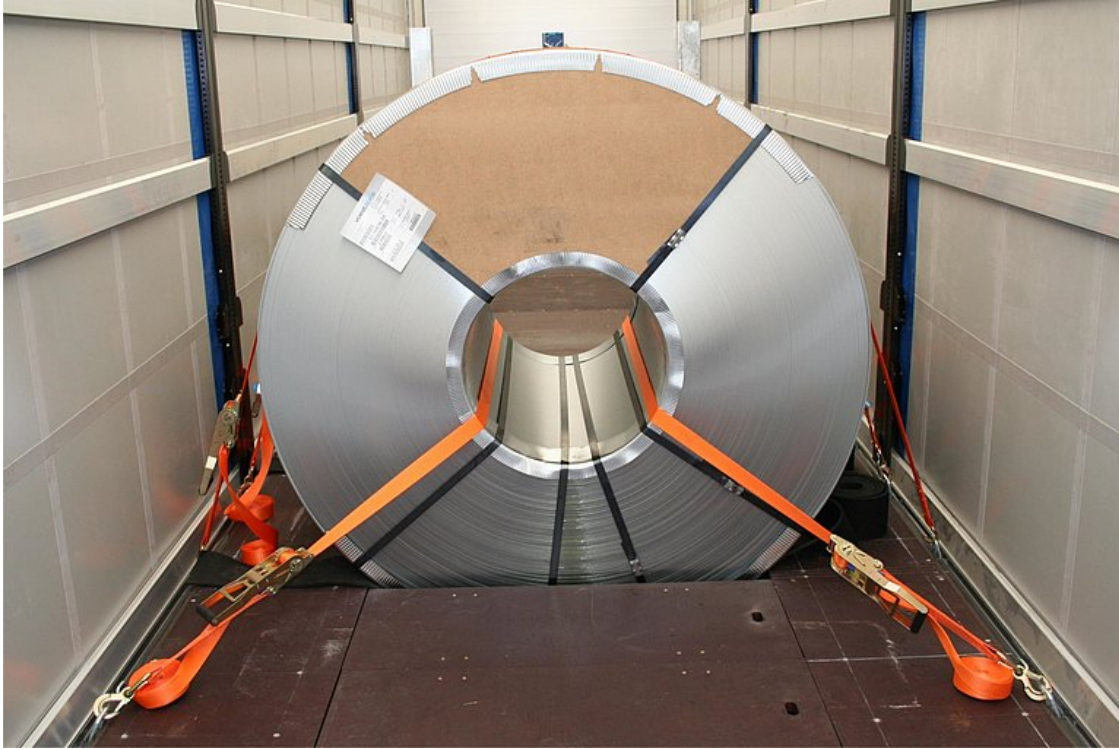
## Product impressions



Low corrosion, high-quality aluminium body components, tested according to EN 12642 Code XL



Reinforced frame construction for coil transports of 30 t at centre of gravity across minimum of 2,000 mm load length



Loading example - coil transport

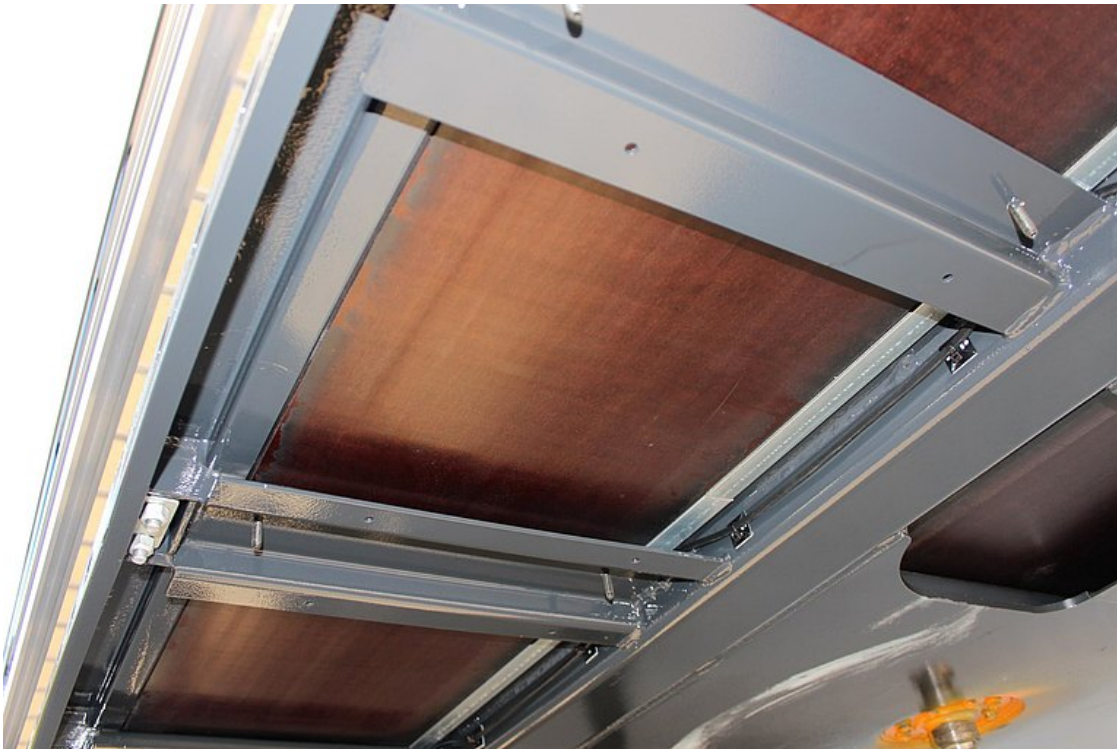


Coil recess with useful length of approx. 7,400 mm, with 5 pairs of integrated racks, for coil diameters up to 2,100 mm





Stacker-bearing recess cover made from 27 mm resin-coated plywood with trussing



Up to approx. 3,400 mm length at front made from 30 mm resin-coated panels, followed by 27 mm resin-coated plywood to frame end, flush with external frame



Perforated external frame (starting approx. 3,000 mm from front wall) with approx. 100 mm hole spacing, 40/25 mm slot according to DIN EN 12640 and 20 pairs of recessed 2.5 t lashing points/rings, and an additional 5 pairs of 4 t lashing points in the recess area on the external frame



Manually operated hydraulic lifting roof, 400 mm elevation for rapid loading and unloading

