

4-axle low-loader trailer with offset platform



Product benefits

- Raised platform at the front incl. offset frame, tapered corners
- High point loading due to narrow cross member spacing
- Pull-out extensions, on both sides of drop deck and rear taper, incl. extension planks for transporting wide loads
- Excavator shovel recess between cross members at rear
- 8 pairs of recessed foldable 10 t lashing rings in floor (6 in drop deck and 2 on raised platform)
- 5 pairs of 3 t lashing bars at bottom of external frame
- 1 accessory compartment at front centre of raised platform, with folding lid
- Installation of axles from well-known manufacturers such as SAF or BPW
- OPTIONAL: Offset drawbar with pivoting eye 40 + 50 mm
- OPTIONAL: 2-part loading ramps with motor-hydraulic ramp actuators
- OPTIONAL: Ramps with hydraulic lateral movement, operated on semitrailer
- OPTIONAL: Wheel recesses for transporting special vehicles

Product details

TYPE DESIGNATION

4-AXLE LOW LOADER TRAILER - TYPE TÜ

WEIGHTS

Gross weight (techn.): 40 t

Payload: approx. 32.1 t

Gross weight (perm.): 24 t

Tare weight: approx. 8 t

DIMENSIONS

Approx. 2,800 mm = raised platform at front incl. frame offset

Approx. 5,200 or 5,900 mm = drop-deck platform - flat load surface or external surfaces advanced

Approx. 1,000 mm = rear access slope

Total width: 2,550 mm or approx. 3,000 mm with extension

Loading height, laden: approx. 870 mm

FRAME

Welded steel construction with flat front frame offset or body offset
and drive-on taper at rear

Excavator shovel recess = recess at rear between side members, approx. 1,850 mm long

6 pairs of mounting pockets for 100 x 50 mm tubular steel posts in external frame

(4 in the drop deck and 2 on raised platform)

5 pairs of 3 t lashing bars at bottom of external frame

8 pairs of recessed foldable 10 t lashing rings in floor (6 in drop deck and 2 on raised platform).

CHASSIS

Reinforced, maintenance-free parabolic springs

Low-loader axles, each with 11 t axle load

S-cam brake 300/200 mm, autom. brake linkage adjuster

Dual-axle compensation at front and rear

Tyres :

16 x 2 4 5/7 0 R 17.5 14 3 J, manufacturer as per factory specifications

16 steel wheel rims 6.75 x 17.5, 10-hole, with rim offset, silver

BRAKE SYSTEM

Brake system according to EC Directive 71/320 or EC E R13

Two-line brake
EBS - electronic brake system
Wabco 4S3M = 1st and 3rd axles sensed
Spring-loaded parking brake on 3rd and 4th axles
Aluminium air tank

FLOOR

Spruce wood floor 50 mm, waterproofed, protruding approx. 5 - 10 mm beyond frame profiles or beyond steel stud plate cover over rear wheels

EXTENSION

Pull-out extensions, on both sides of drop deck and rear taper,
extending parts hot-dip galvanised, incl. extension planks
(track width of construction machines/vehicles to be transported must not exceed external frame width of 2,550 mm)

2 pull-out/removable warning signs each at front and rear, extendible to 3,000 mm

RAMPS

2 foldable, 1-part loading ramps, approx. 2,800/750 mm
with hardwood flooring,
externally welded square ribs on ramps and
rear access slope

Ramp width manually adjustable , with rod (min. spacing approx. 300 mm up to max. total width of 2,810 mm)

lockable in driving position using chains with turnbuckle
2 autom. folding supports at rear
Lifting aid with coil spring

ELECTRICAL EQUIPMENT

24 V lighting system according to EC Directive 76/756/E WG
2 five-chamber LED tail lights on ramps
LED side marker lights
1 clearance lamp for each front warning sign and
1 contour light on each rear warning sign
Fixed cable(s) with 2 x 7-pin or 1 x 15-pin connector
Bracket incl. revolving beacon on left ramp, with connecting cable and socket on end plate

PAINTWORK

Blasted with steel granulate, treated with zinc dust primer and spray painted 2-component acrylic paints for commercial vehicles (standard RAL or truck colour)

Plastic and hot-dip galvanised parts (extensions etc.) unpainted,
powder-coated attachments/installation parts and drawbar black

Reflective contour marking strips across entire length of sides and on the rear (white on sides and red at rear by default), according to ECE 48

ACCESSORIES

Rear markings as per ECE standards

ATTACHMENTS

Wheel chock(s) as per regulations

Plastic mudguards or splashguards with spray protection as per regulations

Side impact protection

Spare wheel well for 1 spare wheel on right in direction of travel

1 accessory compartment at front centre of raised platform, with folding lid

Externally welded square ribs on ramps and rear access slope

Centre of gravity marking

Brackets for extension planks on frame on left in direction of travel

DRAWGEAR

Fixed drawbar, 50 mm heavy-duty drawbar eye ,
with silent bushing

Product impressions



4-axle low loader trailer with offset platform



Raised platform at the front incl. offset frame, tapered corners



1 accessory compartment at front centre of raised platform, with folding lid



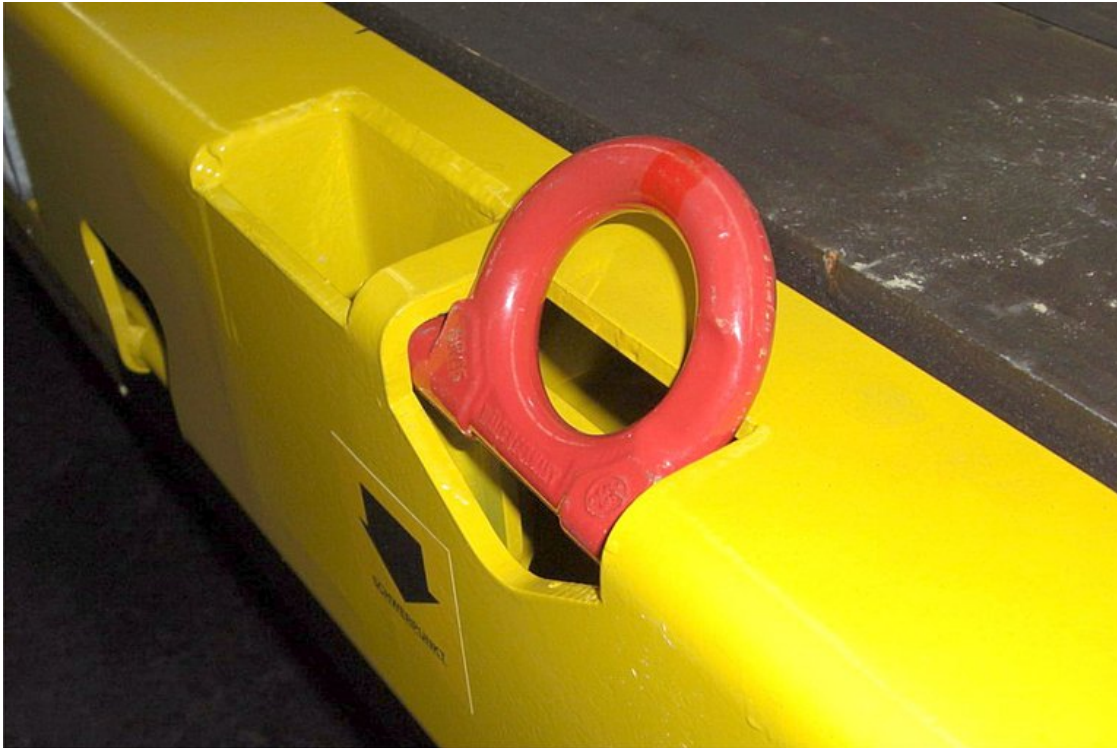
2 folding single-part loading ramps with hardwood flooring



Pull-out extensions, on both sides of drop deck and rear taper, incl. extension planks for transporting wide loads



Excavator shovel recess between side members at rear



8 pairs of recessed foldable 10 t lashing rings in floor (6 in drop deck and 2 on raised platform)



OPTIONAL: Offset drawbar with pivoting eye, 40 + 50 mm

