

Left and rearwards tipping trailer on 4-axle truck



Product benefits

- Tipper body for heavy rock use
- Torsion-resistant, weight-optimised subframe structure
- Hard chrome-plated, high-quality tipping cylinder
- OPTIONAL: Foldable lashing rings
- OPTIONAL: Foldable aluminium underride protection for road-finishing use
- OPTIONAL: Front crane assembly with reinforced subframe
- OPTIONAL: Without fixed corner post front left, left corner post integrated into side wall/Bordmatic

Product details

TYPE DESIGNATION

LEFT AND REARWARDS TIPPING TRAILERS ON 4-AXLE TRUCKS
for the transport of rubble, excavated earth, heavy stone

and occasionally bituminous mixtures/road-finishing use

PAINTWORK

Blasted with steel granulate, treated with zinc dust primer and spray painted with 2-component acrylic paints for commercial vehicles

Plastic and hot-dip galvanised parts unpainted,
powder-coated attachments/installation parts black

Reflective contour marking strips on both sides along entire length (continues over truck cab) and all-round contour marking at rear
(white on sides and red at rear as standard), according to ECE 48

ATTACHMENTS

Rear sign plate(s)

Tipper body rubber centre support

Brackets for wheel chock(s)

Spray protection using rubberised fabric, foldable, as per regulations

Aluminium cover on tail lights

SUBFRAME

Continuous side members with tilt cylinder bearings and outriggers

Connector lock for tipper body with cross-over protection

HIGH-PRESSURE HYDRAULIC TIPPING SYSTEM

32 t tilt cylinder for 2-way tipping,
with safety rope

80 l pump for direct mounting,

60 l oil reservoir with oil filling,

pneum. tip valve with overpressure protection and actuation in cab

TIPPER BODY

approx. 14.4 m³

Internal length: approx.

5,600 MM

Internal width: approx. 2,380 mm (incl. between posts)

External width: approx. 2,550 mm

Static and weight-optimised full-steel welded construction in

elastic membrane design

FLOOR REINFORCED WITH 8 MM

wear-resistant steel plate, type 450,
with continuously welded, closely ribbed trapezoidal struts below,
thus minimising weld distortion

FIXED FRONT WALL

approx.

6 MM

thick and approx.

1,250 MM

high

with solid supports and corner posts pointing forwards,

Cab protection with lashing eyes

and shovel bracket on front wall

plus

fixed ladder on outside front

Tapered corners inside front wall of body for transporting bituminous mixtures

ON RIGHT IN DIRECTION OF TRAVEL

continuous side wall made from approx. 85/6 mm thick

wear-resistant steel plate, type 450, approx.

1,080 MM

high,

right side wall

FIXED

with tapering inside corners and

solid corner joints

as well as fixed chute side panel

BORDMATIK ON LEFT IN DIRECTION OF TRAVEL

= hydr. folding side wall 85/6 mm,

approx.

1,080 MM

high,

membrane construction made from fine-grained special steel panels (HB 450),

with dual-action cylinder on the front wall, operated from cab,
can be folded out to max. 170°,
autom. locking, non-swinging
Short side wall chute panel at front to limit direction of dumped
materials to the front

HYDRAULIC REAR WALL FLAP APPROX. 560 MM HIGH

with hydr. locking controlled by dual-action cylinder and
pneum. 3-way valve

ATTACHED, HINGED REAR WALL

made of wear-resistant steel,
raised pendulum mount
with pin retainer, removable under specific conditions, approx. 50 mm gap to floor

FIXED LEFT-HAND

reinforced corner post at rear,
with fixed side panel for discharge chute
Deflection wedges to corner posts on both sides

Product impressions



2-sided tipper body on 4-axle truck



4 mm steel sheet rear wall, approx. 980 mm high, hinged with raised bearing and pneum. lock that can be operated from the cab and unit can be partially folded down



Tipper body design with conical trapezoidal profile side members in high-strength, lightweight design with small bottom panels for high dent resistance and shock absorption



OPTIONAL: Bordmatic (= hydraulically folding side wall) on left side



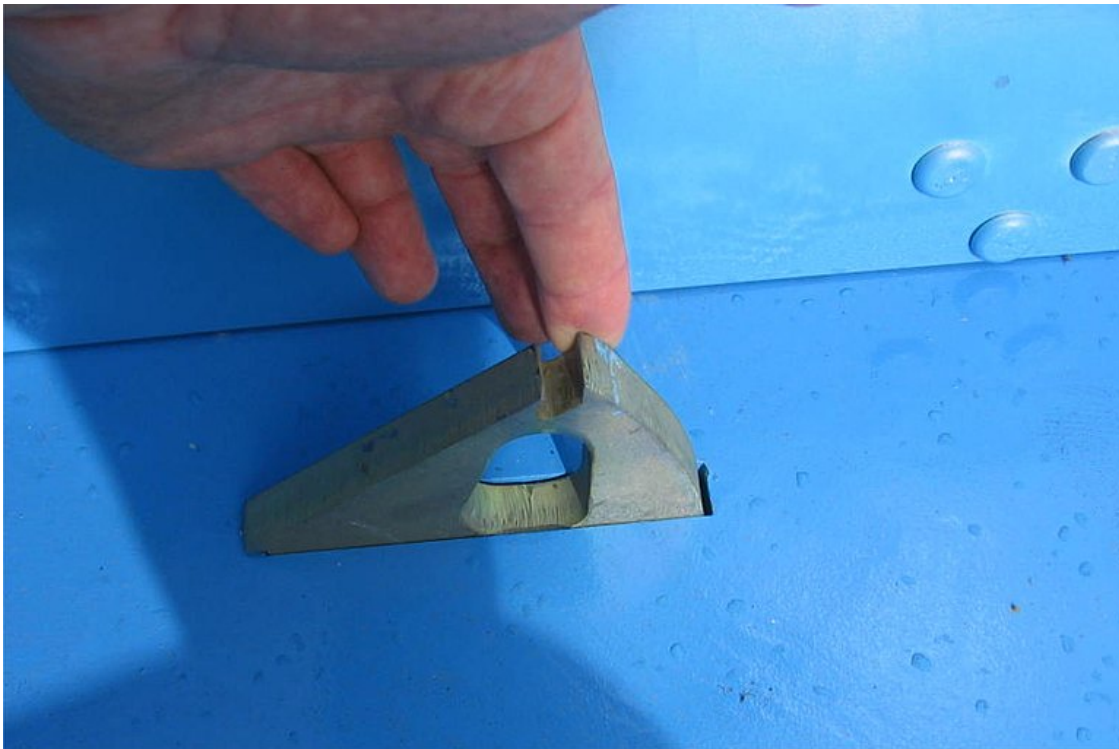
OPTIONAL: Foldable aluminium underride protection for road-finishing use



OPTIONAL: Without fixed corner post front left, left corner post integrated into side wall/Bordmatic



Hard chrome-plated, high-quality tilt cylinder



OPTIONAL: Foldable lashing rings

