

# 3-axle platform semitrailer - building materials



## Product benefits

- Reinforced frame construction for 20 t point load over 4 m at centre of gravity
- Reinforced aluminium hollow profile front wall with integrated equipment bracket
- Aluminium hollow profile rear wall, internally riveted frame, foldable, with Kinnegrip double locking
- Aluminium hollow profile side walls, with Kinnegrip double locking
- Installation of axles from well-known manufacturers such as SAF or BPW
- OPTIONAL: Cement cover consisting of roof arches inserted directly into the central and rear corner posts
- OPTIONAL: RULASI = post-based load securing system with various rack positions
- OPTIONAL: Reinforced body with load securing certified according to DIN EN 12642 Code XL
- OPTIONAL: Weather-resistant larch or hardwood floor, 40 mm, lengthwise, without secondary floor
- OPTIONAL: Anodised aluminium stacker protection strips on both sides of external frame
- OPTIONAL: Perforated external frame with approx. 100 mm hole spacing, 50/30 mm slot, for securing 2 t per lashing point

## Product details

### TYPE DESIGNATION

3-AXLE PLATFORM SEMITRAILER RH125 P - BUILDING MATERIALS

---

### WEIGHTS

Gross train weight (perm.): 40 t

Gross weight (techn.): 39 t

Axle assembly load (techn.): 27 t

Fifth-wheel load (techn.): 12 t

Tare weight: approx. 5.6 t

---

### DIMENSIONS

Internal platform length: approx. 13,620 mm

Internal platform width: approx. 2,480 mm

Total width: 2,550 mm

Loading height: approx. 125 mm over fifth-wheel height

---

### FRAME

Welded steel frame construction, reinforced for 20 t point load  
over 4 m at centre of mass

Frame for unladen fifth-wheel height of 1,150 - 1,220 mm with air-sprung STT

Replaceable 2" kingpin (EC installation dimension,  
width across corners: 2,040 mm)

23 pairs of recessed 2.5 t lashing points according to UVV

---

### CHASSIS

Air suspension with lifting and lowering device (approx. +120/-80 mm)

Automatic adjustment of driving level from 15 km/h

Air suspension unit with low-maintenance 430 mm disc brake axles,  
3 x 9 t rigid, wheelbase 2 x 1,310 mm

Tyres :

6 x 385/65 R 22.5 160J, manufacturer as per factory specifications

6 steel wheel rims 11.75 x 22.5, 10-hole, 120 mm rim offset, silver

---

### SUPPORT FIXTURES

Mechan. 2 x 12 t support jacks, single-sided operation and thrust compensation, manufacturer as  
per factory specifications

---

## **BRAKE SYSTEM**

Brake system according to EC Directive 71/320 or ECE R13

Two-line brake

EBS - electronic brake system

Wabco 2S2M = one axle sensed

RSS - stability program

Spring-loaded parking brake on 2 axles

Steel air tank

---

## **FLOOR**

Reinforced body design in accordance with DIN EN 12642 Code XL load securing certificate

Resin-coated plywood floor, 27 mm, flush with external frame

2 steel top-hat rails over the longitudinal beams

(floor load capacity 7 t, stacker axle load according to CSC)

---

## **SIDE WALLS**

Fixed aluminium hollow profile front wall, 1,200 mm, with 2 centre supports,

2 lashing rings inside for load securing

Front wall reinforced inside with galvanised steel plate,

approx. 650 mm high

4-part aluminium hollow profile side walls, 1,000/25 mm, with vertical and horizontal rubber seal and internally riveted frame, foldable with Kinnegrip double locking

Foldable aluminium hollow profile rear wall, 1,000 mm high, with vertical and horizontal rubber seal and internally riveted frame,

foldable with Kinnegrip double locking

2 folding steps

---

## **ELECTRICAL EQUIPMENT**

24 V lighting system according to EC Directive 76/756/EWG

2 seven-chamber tail lights in underride protection

LED side marker lights

2 clearance lamps

2 contour lights on underride protection

2 x 7-pin and 1 x 15-pin socket

---

## **PAINTWORK**

Blasted with steel granulate, treated with zinc dust primer and spray painted with 2-component acrylic paints for commercial vehicles (standard RAL or truck colour)

Plastic and hot-dip galvanised parts unpainted,

powder-coated attachments/installation parts black

Reflective contour marking strips across entire length of sides and all-round contour marking at rear (white on sides and red at rear by default), according to ECE 48

---

## **ACCESSORIES**

Rear markings as per ECE standards (horizontal on rear doors/rear wall)

---

## **ATTACHMENTS**

Aluminium crash guard across rear

Wheel chock(s) as per regulations

Single wheel plastic mudguards with spray protection as per regulations

Aluminium underride protection, coated white

Side impact protection made from aluminium profiles as per regulations, coated black

1 spare wheel bracket for 1 spare wheel (rear right)

1 plastic toolbox, lockable, unpainted , on left after axle

---

## **POSTS**

Integrated extended lever locks, Kinnegrip system

2 front corner posts, bolted, protruding from sides, in front wall height

6 Kinnegrip centre posts, foldable and removable, in side wall height

2 rear Kinnegrip corner posts, foldable and removable, side-mounted, in side wall height

---

## Product impressions



Reinforced body design with load securing certificate in accordance with DIN EN 12642 Code XL



Reinforced frame design for point loading 20 t on 4 m in the centre of gravity



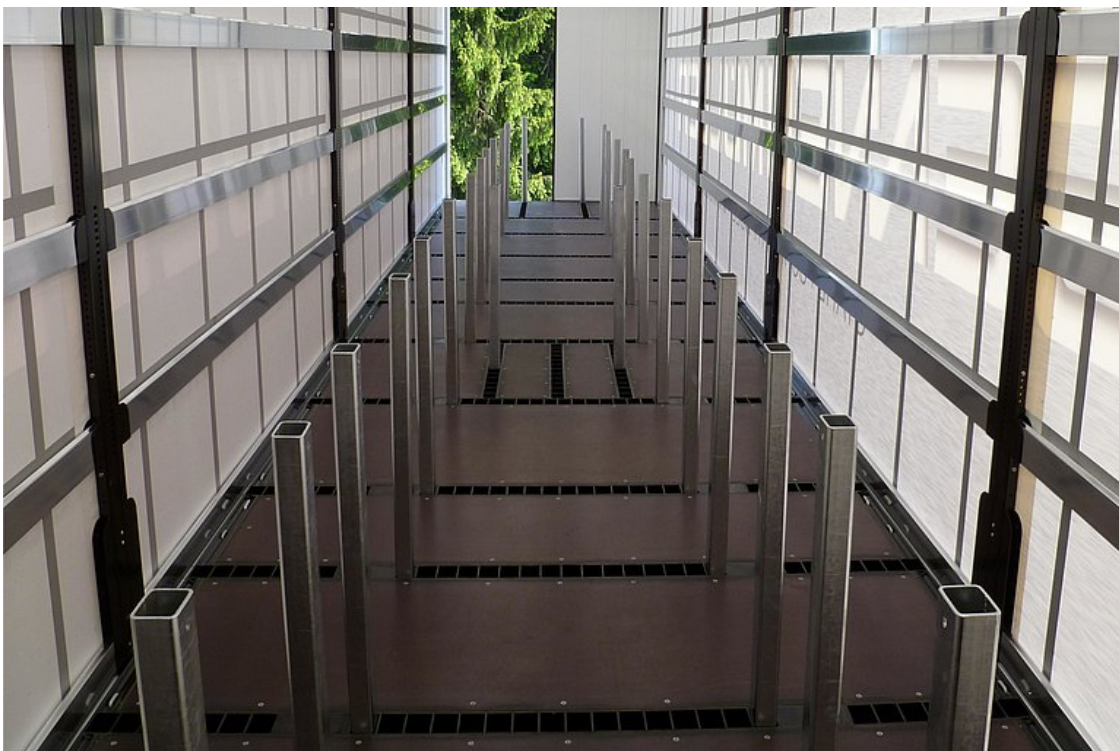
Fixed aluminium hollow profile front wall with 2 centre supports, inside with 2 lashing eyes for load securing and reinforced with steel sheet



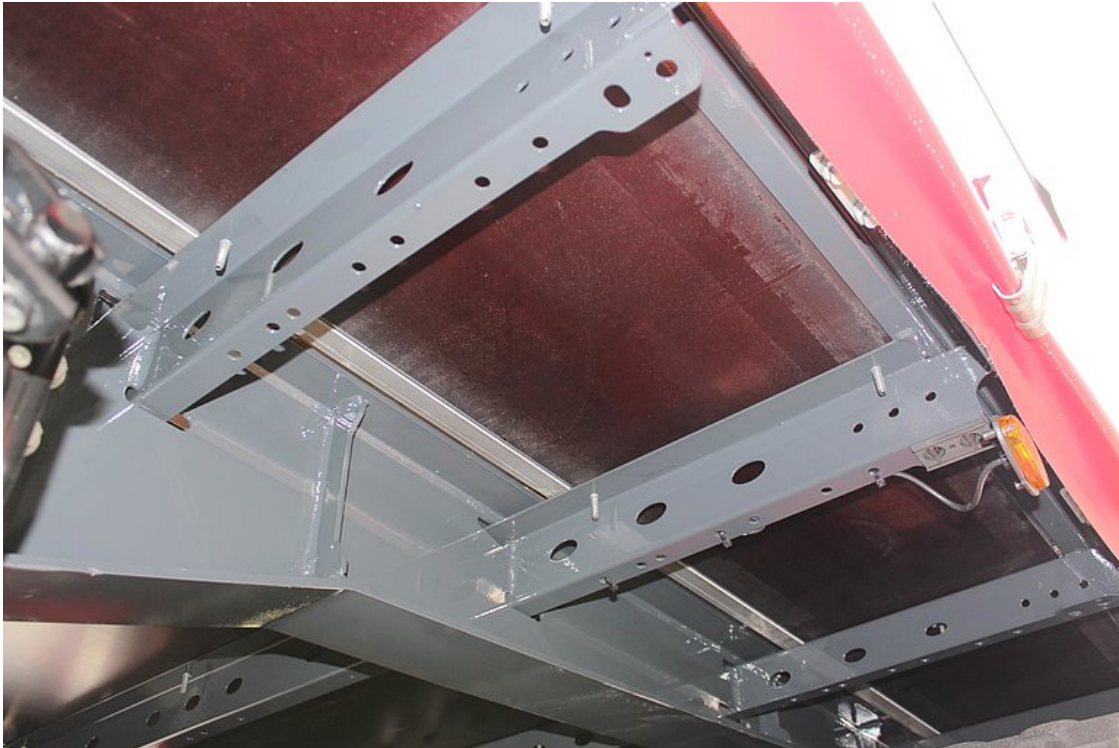
Foldable aluminium hollow profile rear wall, with rubber seals on the horizontal and vertical planes



OPTIONAL: Cement cover - 4 roof arches directly inserted into the central and rear corner posts and 1 central row of roof planks (roof inclination 500 mm)



OPTIONAL: Schwarzmüller post-based load securing system with various rack positions



27-mm resin-coated panel floor, flush with external frame and with 2 steel top-hat profile rails above the side members (stacker axle load 7 t)



OPTIONAL: Anodised aluminium stacker protection strip, on both sides of the external frame

